



PRODUCT CATALOG



www.level1.com



WIRED NETWORKING

4

SWITCHES	5
POE PERIPHERALS	26
NETWORK CARDS	33
MEDIA CONVERSION	37
PRINT SERVERS	44
OPTICAL TRANSCEIVERS	45

INDUSTRIAL

52

SWITCHES	52
CONVERTERS	58
OPTICAL TRANSCEIVERS	60

SECURITY

63

CAMERAS	63
NETWORK VIDEO RECORDERS	69
VIDEO EXTENDERS	72
ACCESSORIES	73
SURVEILLANCE KITS	77

WIRELESS

78

WIFI DEVICES	78
--------------	----

AUDIO/VIDEO

84

AUDIO VIDEO EXTENDERS	84
KVM DEVICES	88

POWER

95

SMART PDUS	91
POWER SUPPLIES	92
UNINTERRUPTIBLE POWER SUPPLIES (UPS)	95

INDEX



NETWORKING





5-Port Fast Ethernet PoE Switch

FEP-0511 (65W)
FEP-0511W90 (90W)

- 4 Fast Ethernet PoE ports and 1 Fast Ethernet port
- IEEE 802.3af/at PoE compliant to simplify deployment and installation
- Auto-detection and protection of non-standard PoE devices
- IEEE 802.3x Flow Control protects against lost packets for reliable data transmission



6-Port Fast Ethernet PoE Switch

FEP-0631

- IEEE 802.3af/at PoE compliant to simplify deployment and installation
- Supports port-based VLAN
- Connection distance of up to 250m at 10Mbps data rate
- Auto-detection and protection of non-standard PoE devices
- IEEE 802.3x Flow Control protects against lost packets for reliable data transmission
- Total PoE power budget: 60W, up to 30W per port
- PoE Auto-check function



5-Port Fast Ethernet PoE Switch

FSW-0513 (120W)

- Provides flexibility of 4 x 10/100BASE-TX PoE ports
- PoE on/off control per port by dip switches
- Auto-detection and protection of non-standard PoE devices
- 10/100Mbps, full/half-duplex, auto-negotiation, auto-MDI/MDIX
- IEEE 802.3x Flow Control protects against lost packets for reliable data transmission



8-Port Fast Ethernet PoE Switch

FEP-0800W65 (65W)

- IEEE 802.3x Flow Control protects against lost packets for reliable data transmission
- 10/100Mbps, full/half-duplex, auto-negotiation, auto-MDI/MDIX
- PoE on/off control per port by dip switches
- Simple Plug and Play installation



8-Port Fast Ethernet PoE Switch

FEP-0812 (65W)

- 4 Fast Ethernet PoE ports and 4 Fast Ethernet ports
- IEEE 802.3af/at PoE compliant to simplify deployment and installation
- Auto-detection and protection of non-standard PoE devices
- IEEE 802.3x Flow Control protects against lost packets for reliable data transmission



10-Port Fast Ethernet PoE Switch

FGP-1031

- 8 10/100 Mbps PoE ports/ 2 Port Gigabit
- First port supports output HiPoE_60W
- IEEE 802.3af/at PoE compliant to simplify deployment and installation
- IEEE 802.3x Flow Control protects against lost packets for reliable data transmission
- 1000Mbps full-duplex, 10/100Mbps full/half-duplex, auto-negotiation, auto-MDI/MDIX



10-Port Fast Ethernet PoE Switch

FGP-1000 (120W)
FGP-1000W65 (65W)

- 8 Fast Ethernet PoE ports, 1 Gigabit port and 1 Gigabit SFP slot
- IEEE 802.3x Flow Control protects against lost packets for reliable data transmission
- PoE on/off control per port by dip switches
- Simple Plug and Play installation



16-Port Fast Ethernet PoE Switch

FEP-1611

- IEEE 802.3af/at PoE compliant to simplify deployment and installation
- Auto-detection and protection of non-standard PoE devices
- Supports 4K MAC address auto-learning and auto-aging
- 10/100Mbps, full/half-duplex, auto-negotiation, auto-MDI/MDIX
- 19-inch metal housing
- IEEE 802.3x Flow Control protects against lost packets for reliable data transmission
- Total PoE power budget: 240W, up to 30W per port



16-Port Fast Ethernet PoE Switch

FEP-1601 (250W)
FEP-1601W120 (120W)
FEP-1601W150 (150W)

- IEEE 802.3x Flow Control protects against lost packets for reliable data transmission
- 10/100Mbps, full/half-duplex, auto-negotiation, auto-MDI/MDIX
- PoE on/off control per port by dip switches
- 19-inch metal housing



16-Port Fast Ethernet PoE Switch

FEP-1612 (500W)
FEP-1612W380 (380W)
FEP-1612W120 (120W)

- IEEE 802.3af/at PoE compliant to simplify deployment and installation
- Auto-detection and protection of non-standard PoE devices
- Supports 4K MAC address auto-learning and auto-aging
- 10/100Mbps, full/half-duplex, auto-negotiation, auto-MDI/MDIX
- 19-inch metal housing
- IEEE 802.3x Flow Control protects against lost packets for reliable data transmission



20-Port Fast Ethernet PoE Switch

FGP-2031

- 16 Fast Ethernet PoE ports, 2 Gigabit ports and 2 Gigabit SFP slots
- Total PoE power budget: 270W, up to 30W per port
- IEEE 802.3af/at PoE compliant to simplify deployment and installation
- Powerful DIP switch button configuration for PoE Auto-Check, and Extension mode / Default mode / VLAN mode features.
- Supports the PoE auto-check function, which is specially designed to solve the problems of equipment frozen. It can automatically detect the frozen PD equipment and restart the port's output of PoE, and restart the PD device. It gently reduces the maintenance difficulty of engineering.
- Supports port-based VLAN
- 6KV surge protection, 6KV/8KV ESD protection.
- Connection distance of up to 250m at 10Mbps data rate



28-Port Fast Ethernet PoE Switch

FGP-2831

- 24 Fast Ethernet PoE ports, 2 Gigabit ports and 2 Gigabit SFP slots
- Total PoE power budget: 390W, up to 30W per port
- IEEE 802.3af/at PoE compliant to simplify deployment and installation
- Powerful DIP switch button configuration for PoE Auto-Check, and Extension mode / Default mode / VLAN mode features.
- Supports the PoE auto-check function, which is specially designed to solve the problems of equipment frozen. It can automatically detect the frozen PD equipment and restart the port's output of PoE, and restart the PD device. It gently reduces the maintenance difficulty of engineering.
- Supports port-based VLAN
- 6KV surge protection, 6KV/8KV ESD protection.
- Connection distance of up to 250m at 10Mbps data rate



26-Port Fast Ethernet PoE Switch

FGP-2601W150 (150W)

- 24 Fast Ethernet PoE ports and 2 Gigabit ports
- IEEE 802.3af/at PoE compliant to simplify deployment and installation
- Power protection: OVP/OCP/OTP
- IEEE 802.3x Flow Control protects against lost packets for reliable data transmission
- PoE on/off control per port by dip switches
- 19-inch metal housing



26-Port Fast Ethernet PoE Switch

FGP-2602W380 (380W)

- 24 Fast Ethernet PoE ports and 2 Gigabit SFP slots
- IEEE 802.3af/at PoE compliant to simplify deployment and installation
- Power protection: OVP/OCP/OTP
- IEEE 802.3x Flow Control protects against lost packets for reliable data transmission
- PoE on/off control per port by dip switches
- 19-inch metal housing



34-Port Fast Ethernet PoE Switch

FGP-3400W250 (250W)
FGP-3400W380 (380W)
FGP-3400W630 (630W)
FGP-3400W760 (760W)

- 32 Fast Ethernet PoE ports and 2 Gigabit ports
- PoE on/off control per port by dip switches
- IEEE 802.3af/at PoE compliant to simplify deployment and installation
- IEEE 802.3x Flow Control protects against lost packets for reliable data transmission
- 19-inch rackmount kit included



5-Port Gigabit PoE Switch

GEP-0520 (61.6W)

- 1 Gigabit port and 4 Gigabit PoE ports
- IEEE 802.3af PoE compliant to simplify deployment and installation
- 9K jumbo frames to increase data transfer rates
- Auto-detection and protection of non-standard PoE devices
- IEEE 802.3x Flow Control protects against lost packets for reliable data transmission
- Minimize carbon footprint with advanced energy efficient technology (IEEE 802.3az)



5-Port Gigabit PoE Switch

GEP-0521

- 1 Gigabit port and 4 Gigabit PoE ports
- IEEE 802.3af/at PoE compliant to simplify deployment and installation
- 9K jumbo frames to increase data transfer rates
- Auto-detection and protection of non-standard PoE devices
- IEEE 802.3x Flow Control protects against lost packets for reliable data transmission
- Total PoE power budget: 115W, up to 30W per port
- Minimize carbon footprint with advanced energy efficient technology (IEEE 802.3az)



5-Port Gigabit PoE Switch

GEP-0523

- IEEE 802.3af/at PoE compliant to simplify deployment and installation
- 10/100/1000Mbps wire speed transmission and reception
- Auto-detection and protection of non-standard PoE devices
- IEEE 802.3x Flow Control protects against lost packets for reliable data transmission
- Total PoE power budget: 60W, up to 30W per port



GEP-0625, 6-Port 2.5 Gigabit PoE Switch, 1 x 10G/SFP+ port

GEP-0625

- "5 x 100/1000/2500 Base-T RJ45 copper ports 4 x PoE Output and 1 x 10G/SFP+ port
- Support IEEE 802.3bt at Port 1, total 65W PoE budget
- Supports 8K MAC address auto-learning and auto-aging
- 15K jumbo frames to increase data transfer rates.
- IEEE 802.3x Flow Control protects against lost packets for reliable data transmission
- Desktop and Wall mount design
- Quick and easy installation



8-Port Gigabit PoE Switch

GEP-0812 (65W)
GEP-0812W90 (90W)
GEP-0812W120 (120W)

- 4 Gigabit ports and 4 Gigabit PoE ports
- Auto-detection and protection of non-standard PoE devices
- Supports 8K MAC address auto-learning and auto-aging
- IEEE 802.3af/at PoE compliant to simplify deployment and installation
- 9K jumbo frames to increase data transfer rates
- 11-inch metal housing with 19-inch rackmount kit included



8-Port Gigabit PoE Switch

GEP-0821(123.2W)
GEP-0822(240W)

- IEEE 802.3af/at PoE compliant to simplify deployment and installation
- 10/100/1000Mbps wire speed transmission and reception
- 9K jumbo frames to increase data transfer rates
- Supports 8K MAC address auto-learning and auto-aging
- Auto-detection and protection of non-standard PoE devices
- IEEE 802.3x Flow Control protects against lost packets for reliable data transmission
- 19-inch rackmount kit included
- Total PoE power budget: 123.2W/240W, up to 30W per port
- Minimize carbon footprint with advanced energy efficient technology (IEEE 802.3az)



8-Port Gigabit PoE Switch

GEP-0823

- IEEE 802.3af/at PoE compliant to simplify deployment and installation
- 10/100/1000Mbps wire speed transmission and reception
- Auto-detection and protection of non-standard PoE devices
- IEEE 802.3x Flow Control protects against lost packets for reliable data transmission
- Total PoE power budget: 120W, up to 30W per port



GEP-0925, 9-Port 2.5 Gigabit PoE Switch, 1 x 10G/SFP+ port

GEP-0925

- "8 x 100/1000/2500 Base-T RJ45 PoE copper ports and 1 x 10G/SFP+ port
- Supports 8K MAC address auto-learning and auto-aging
- Support IEEE 802.3bt at Port 1, total 120W PoE budget
- 15K jumbo frames to increase data transfer rates
- IEEE 802.3x Flow Control protects against lost packets for reliable data transmission
- Desktop and Wall mount design
- Quick and easy installation"



12-Port-Gigabit Switch

GEP-1221

- 8 Gigabit PoE ports/ 2 Port Gigabit and 2 Gigabit SFP slots
- IEEE 802.3af/at PoE compliant to simplify deployment and installation
- IEEE 802.3x Flow Control protects against lost packets for reliable data transmission
- 1000Mbps full-duplex, 10/100Mbps full/half-duplex, auto-negotiation, auto-MDI/MDIX
- Built-in power supply



16-Port Gigabit PoE Switch

GEP-1621 (250W)

- 16 PoE-Plus Gigabit Ethernet ports
- 10/100/1000Mbps wire speed transmission and reception
- IEEE 802.3af/at PoE compliant to simplify deployment and installation
- Auto-detection and protection of non-standard PoE devices
- 9K jumbo frames to increase data transfer rates
- Supports 8K MAC address auto-learning and auto-aging
- IEEE 802.3x Flow Control protects against lost packets for reliable data transmission
- Minimize carbon footprint with advanced energy efficient technology (IEEE 802.3az)
- 19-inch metal housing



16-Port Gigabit PoE Switch

GEP-1622

- 16 PoE-Plus Gigabit Ethernet ports
- 10/100/1000Mbps wire speed transmission and reception
- IEEE 802.3af/at PoE compliant to simplify deployment and installation
- Auto-detection and protection of non-standard PoE devices
- 9K jumbo frames to increase data transfer rates
- Supports 8K MAC address auto-learning and auto-aging
- IEEE 802.3x Flow Control protects against lost packets for reliable data transmission
- Minimize carbon footprint with advanced energy efficient technology (IEEE 802.3az)
- 19-inch metal housing
- Total PoE power budget: 480W, up to 30W per port



20-Port Gigabit PoE Switch

GEP-2021

- 16 Gigabit PoE ports, 2 Gigabit ports and 2 Gigabit SFP slots
- Supports DIP switch configuration for VLAN mode and Default mode features.
- Total PoE power budget: 270W, up to 30W per port
- IEEE 802.3af/at PoE compliant to simplify deployment and installation
- Supports port-based VLAN
- Connection distance of up to 250m at 10Mbps data rate
- 6KV surge protection, 6KV/8KV ESD protection.



28-Port Gigabit PoE Switch

GEP-2821

- 24 Gigabit PoE ports, 2 Gigabit ports and 2 Gigabit SFP slots
- Supports DIP switch configuration for VLAN mode and Default mode features.
- Total PoE power budget: 390W, up to 30W per port
- IEEE 802.3af/at PoE compliant to simplify deployment and installation
- Supports port-based VLAN
- Connection distance of up to 250m at 10Mbps data rate
- 6KV surge protection, 6KV/8KV ESD protection.



5-Port Fast Ethernet Switch
FEU-0511

- Provides flexibility of 4 x 10/100BASE-TX ports
- 100Base-FX Multi-mode fiber for the link up to 2km
- 10/100Mbps, full/half-duplex, auto-negotiation, auto-MDI/MDIX
- IEEE 802.3x Flow Control protects against lost packets for reliable data transmission
- Provides wall or desktop mounting



5-Port Fast Ethernet Switch
FEU-0512

- Provides flexibility of 5x 10/100BASE-TX ports
- 10/100Mbps, full/half-duplex, auto-negotiation, auto-MDI/MDIX
- Supports 1K MAC address auto-learning and auto-aging
- Quick and easy installation



8-Port Fast Ethernet Switch
FEU-0812

- Provides flexibility of 8 x 10/100BASE-TX ports
- 10/100Mbps, full/half-duplex, auto-negotiation, auto-MDI/MDIX
- Quick and easy installation
- Supports 1K MAC address auto-learning and auto-aging
- Simple Plug and Play installation



5-Port Fast Ethernet Switch
FSW-0508TX

- Provides flexibility of 5x 10/100BASE-TX ports
- 10/100Mbps, full/half-duplex, auto-negotiation, auto-MDI/MDIX
- Supports 2K MAC address auto-learning and auto-aging
- IEEE 802.3x Flow Control protects against lost packets for reliable data transmission
- Magnetic base for easy placement
- Compact, lightweight design



8-Port Fast Ethernet Switch
FSW-0808TX

- Provides flexibility of 8 x 10/100BASE-TX ports
- 10/100Mbps, full/half-duplex, auto-negotiation, auto-MDI/MDIX
- Supports 1K MAC address auto-learning and auto-aging
- IEEE 802.3x Flow Control protects against lost packets for reliable data transmission
- Magnetic base for easy placement
- Quick and easy installation



16-Port Fast Ethernet Switch
FSW-1650

- Provides flexibility of 16 x 10/100BASE-TX ports
- 10/100Mbps, full/half-duplex, auto-negotiation, auto-MDI/MDIX
- Supports 8K MAC address auto-learning and auto-aging
- IEEE 802.3x Flow Control protects against lost packets for reliable data transmission
- Minimize carbon footprint with advanced energy efficient technology (IEEE 802.3az)



24-Port Fast Ethernet Switch
FSW-2450

- Provides flexibility of 24 x 10/100BASE-TX ports
- 10/100Mbps, full/half-duplex, auto-negotiation, auto-MDI/MDIX
- Supports 8K MAC address auto-learning and auto-aging
- IEEE 802.3x Flow Control protects against lost packets for reliable data transmission
- 19-inch metal housing



5-Port Gigabit Switch
GEU-0521

- 4 Gigabit Ethernet ports and 1 Gigabit SFP slot
- 9K jumbo frames to increase data transfer rates
- 1000Mbps full-duplex, 10/100Mbps full/half-duplex, auto-negotiation, auto-MDI/MDIX
- Supports 1K MAC address auto-learning and auto-aging
- IEEE 802.3x Flow Control protects against lost packets for reliable data transmission
- Provides wall or desktop mounting
- Quick and easy installation



5-Port Gigabit Switch
GEU-0522

- 5 Gigabit Ethernet ports
- 10/100/1000Mbps wire speed transmission and reception
- 15K jumbo frames to increase data transfer rates
- Supports 2K MAC address auto-learning and auto-aging
- Provides wall or desktop mounting
- Minimize carbon footprint with advanced energy efficient technology (IEEE 802.3az)



5-Port Gigabit Switch
GEU-0523

- 5 Gigabit Ethernet ports
- 10/100/1000Mbps wire speed transmission and reception
- 9K jumbo frames to increase data transfer rates
- Supports 2K MAC address auto-learning and auto-aging
- Provides wall or desktop mounting
- Minimize carbon footprint with advanced energy efficient technology (IEEE 802.3az)
- Supports loop detection and features an LED indicator



5-Port Gigabit Switch
GSW-0507

- 5 Gigabit Ethernet ports
- 1000Mbps full-duplex, 10/100Mbps full/half-duplex, auto-negotiation, auto-MDI/MDIX
- Supports 8K MAC address auto-learning and auto-aging
- 9K jumbo frames to increase data transfer rates
- IEEE 802.3x Flow Control protects against lost packets for reliable data transmission
- Provides wall or desktop mounting
- Quick and easy installation
- Minimize carbon footprint with advanced energy efficient technology (IEEE 802.3az)



5-Gigabit Ethernet Switch
GEU-0525

- 5 x 100/1000/2500 Base-T RJ45 copper ports
- 2500Mbps full-duplex, 100/1000Mbps full/half-duplex, auto-negotiation, auto-MDI/MDIX
- Supports 8K MAC address auto-learning and auto-aging
- 15K jumbo frames to increase data transfer rates
- IEEE 802.3x Flow Control protects against lost packets for reliable data transmission
- Desktop and Wall mount design
- Quick and easy installation



8-Port Gigabit Switch
GSW-0807

- 9K jumbo frames to increase data transfer rates
- 8 Gigabit Ethernet ports
- 1000Mbps full-duplex, 10/100Mbps full/half-duplex, auto-negotiation, auto-MDI/MDIX
- Supports 8K MAC address auto-learning and auto-aging
- IEEE 802.3x Flow Control protects against lost packets for reliable data transmission
- Provides wall or desktop mounting
- Quick and easy installation
- Minimize carbon footprint with advanced energy efficient technology (IEEE 802.3az)



8-Port Gigabit Switch
GEU-0821

- 8 Gigabit Ethernet ports
- 10/100/1000Mbps wire speed transmission and reception
- 9K jumbo frames to increase data transfer rates
- Supports 8K MAC address auto-learning and auto-aging
- Provides wall or desktop mounting
- Minimize carbon footprint with advanced energy efficient technology (IEEE 802.3az)
- VLAN isolation mode on/off control by dip switches



8-Port Gigabit Switch
GEU-0822

- 8 Gigabit Ethernet ports
- 10/100/1000Mbps wire speed transmission and reception
- 9K jumbo frames to increase data transfer rates
- Supports 8K MAC address auto-learning and auto-aging
- Provides wall or desktop mounting
- Minimize carbon footprint with advanced energy efficient technology (IEEE 802.3az)



16-Port Gigabit Switch
GEU-1621

- 16 Gigabit Ethernet ports
- 10/100/1000Mbps wire speed transmission and reception
- 9K jumbo frames to increase data transfer rates
- Supports 8K MAC address auto-learning and auto-aging
- IEEE 802.3x Flow Control protects against lost packets for reliable data transmission
- 19-inch rackmount kit included
- Minimize carbon footprint with advanced energy efficient technology (IEEE 802.3az)



16-Port Gigabit Switch
GSW-1657

- 16 Gigabit Ethernet ports
- 10/100/1000Mbps wire speed transmission and reception
- Supports 8K MAC address auto-learning and auto-aging
- 9K jumbo frames to increase data transfer rates
- Minimize carbon footprint with advanced energy efficient technology (IEEE 802.3az)
- 19-inch metal housing



24-Port Gigabit Switch
GSW-2457

- 24 Gigabit Ethernet ports
- 10/100/1000Mbps wire speed transmission and reception
- 9K jumbo frames to increase data transfer rates
- Supports 8K MAC address auto-learning and auto-aging
- QoS control for traffic prioritization and bandwidth management
- Minimize carbon footprint with advanced energy efficient technology (IEEE 802.3az)
- 19-inch metal housing
- Fanless Design



24-Port Gigabit Switch
GEU-2431

- 24 Gigabit Ethernet ports
- 10/100/1000Mbps, full/half-duplex, auto-negotiation, auto-MDI/MDIX
- 9K jumbo frames to increase data transfer rates
- Supports 8K MAC address auto-learning and auto-aging
- Supports 3 working modes to fulfill different applications



50-Port Fast Ethernet Switch with 2-Port Gigabit
FGU-5021

- 48 Fast Ethernet ports and 2 Gigabit RJ45/SFP combo ports
- Supports 8K MAC address auto-learning and auto-aging
- 19-inch metal housing
- Quick and easy installation



52-Port Unmanaged Gigabit Ethernet Switch
GTU-5211

- 48 Gigabit Ethernet ports and 4 10-Gigabit SFP+ slots
- Supports 32K MAC address auto-learning and auto-aging
- 10K jumbo frames to increase data transfer rates
- IEEE 802.3x Flow Control protects against lost packets for reliable data transmission
- Minimize carbon footprint with advanced energy efficient technology (IEEE 802.3az)



10-Port Web Smart Gigabit PoE Switch
GEP-1051

- 8 Gigabit PoE ports and 2 Gigabit SFP slots
- IEEE 802.3af/at PoE compliant to simplify deployment and installation
- IEEE 802.1d/w/s Spanning Tree Protocol (STP) and port mirroring
- Supports port-based VLAN, IEEE 802.1Q VLAN Tagging
- IEEE 802.3ad LACP for auto port aggregation
- MLD, Telnet, SNMP V1, V2c & V3, RMON, Web Browser, and TFTP Management
- Total PoE power budget: 70W, up to 30W per port



10-Port L2 Managed Gigabit PoE Switch
GEP-1061

- With 8 *10/100/1000Mbps PoE ports and 2*1000Mbps SFP ports, with L2 network management
- Total 180W PoE power budget and usability, up to 2 ports at 90W(1-2 port), or 6 ports at 30W or 8 ports at 15.4W
- IEEE 802.3af/at/bt PoE compliant to simplify deployment and installation
- Support Web Smart configuration for PoE management, and QoS / VLAN / MSTP / Multi-broadcast / ports management features
- 6KV surge protection, 6KV contact / 8KV air ESD protection



28-Port Web Smart Gigabit PoE Switch
GEP-2841

- 24 Gigabit PoE ports, 2 Gigabit Uplink ports and 2 Gigabit Uplink SFP slots
- Total 375W PoE power budget and usability, up to 2 ports at 90W(1-2 port), or 12 ports at 30W or 24 ports at 15.4W
- IEEE 802.3af/at/bt PoE compliant to simplify deployment and installation
- Supports port-based VLAN
- Supports IEEE 802.1P Layer 2 Priority Queuing for improving traffic flow



**26-Port Web Smart
Gigabit PoE Switch**
GEP-2652

- 24 Gigabit Ethernet ports and 2 Gigabit SFP slots
- IEEE 802.3af/at PoE compliant to simplify deployment and installation
- Total PoE power budget: 370W, up to 30W per port
- Supports port-based VLAN, IEEE 802.1Q VLAN Tagging and GVRP
- IEEE 802.1d/w/s Spanning Tree Protocol (STP) and port mirroring
- Supports IPv4/IPv6 network operation
- Supports unknown unicast / broadcast / multicast storm control



**28-Port L2 Managed
Gigabit PoE Switch**
GEP-2861

- 24 Gigabit PoE+ ports and 4 Gigabit SFP ports
- Total PoE power budget: 390W, up to 30W per port
- IEEE 802.3af/at PoE compliant to simplify deployment and installation
- Supports working temperature -10C~50C
- 6KV surge protection, 6KV contact / 8KV air ESD protection



**20-Port L3 Managed
Gigabit Switch**
GTL-2091

- 24 Gigabit PoE ports and 4 10-Gigabit SFP+ slots
- IEEE 802.3af/at PoE compliant to simplify deployment and installation
- Total PoE power budget: 400W, up to 30W per port
- Virtual stacking supports up to 4 switches in a single logical stack for unified management, monitoring and configuration
- Supports port-based VLAN, IEEE 802.1Q VLAN Tagging and GVRP
- IEEE 802.1d/w/s Spanning Tree Protocol (STP) and port mirroring
- Supports IPv4/IPv6 network operation
- Supports unknown unicast / broadcast / multicast storm control
- IP Multicast Filtering through IGMP Snooping V1 / V2 / V3
- Dynamic ARP Inspection (DAI) protects switches against ARP spoofing



**52-Port L2 Plus
Managed Gigabit
Switch**
GEL-5271

- 48 Gigabit Ethernet ports and 4 Gigabit SFP slots
- IEEE 802.3ad LACP for auto port aggregation
- IEEE 802.1d/w/s Spanning Tree Protocol (STP) and port mirroring
- IP Multicast Filtering through IGMP Snooping V1 / V2 / V3
- Supports VLAN (Port-based, Protocol-based, Private, Q-in-Q, Tag-based)
- Supports IPv4/IPv6 network operation



**28-Port L3 Lite
Managed Gigabit
PoE Switch**
GTP-2871

- 24 Gigabit PoE ports and 4 10-Gigabit SFP+ slots
- IEEE 802.3af/at PoE compliant to simplify deployment and installation
- Total PoE power budget: 400W, up to 30W per port
- Virtual stacking supports up to 4 switches in a single logical stack for unified management, monitoring and configuration
- Supports port-based VLAN, IEEE 802.1Q VLAN Tagging and GVRP
- IEEE 802.1d/w/s Spanning Tree Protocol (STP) and port mirroring
- Supports IPv4/IPv6 network operation
- Supports unknown unicast / broadcast / multicast storm control
- IP Multicast Filtering through IGMP Snooping V1 / V2 / V3
- Dynamic ARP Inspection (DAI) protects switches against ARP spoofing



**28-Port L2 Plus
Managed Gigabit
Switch**
GEL-2871

- 24 Gigabit Ethernet ports and 4 Gigabit SFP slots
- IEEE 802.3ad LACP for auto port aggregation
- IEEE 802.1d/w/s Spanning Tree Protocol (STP) and port mirroring
- IP Multicast Filtering through IGMP Snooping V1 / V2 / V3
- Supports VLAN (Port-based, Protocol-based, Private, Q-in-Q, Tag-based)
- Supports IPv4/IPv6 network operation



52-Port L3 Lite Managed Gigabit PoE Switch

GTP-5271

- 48 Gigabit Ethernet ports and 4 10-Gigabit SFP+ slots
- IEEE 802.3af/at PoE compliant to simplify deployment and installation
- Total PoE power budget: 400W, up to 30W per port
- Virtual stacking supports up to 4 switches in a single logical stack for unified management, monitoring and configuration
- Supports port-based VLAN, IEEE 802.1Q VLAN Tagging and GVRP
- IEEE 802.1d/w/s Spanning Tree Protocol (STP) and port mirroring
- Supports IPv4/IPv6 network operation
- Supports unknown unicast / broadcast / multicast storm control



52-Port L3 Managed Gigabit Switch

GTL-5291

- 48 Gigabit Ethernet ports and 4 10-Gigabit SFP+ slots.
- Supports L3 management, such as OSPF, RIP, QoS, VLAN, MSTP, Multi-broadcast, ports management.
- 6KV surge protection, 6KV contact / 8KV air ESD protection. Supports working temperature -10C~50C.



XQS-3126, 26-Port L3 Managed TOR Fiber Switch, 24x 1/10GbE SFP+, 2x 40/100GbE QSFP28, Hot-Swap Redundant Power Supply

XQS-3126

- Delivers industry-leading switching performance with up to 880Gbps capacity, powered by high-performance ASICs and multi-core processors.
- Meets the demanding requirements of modern data centers for high performance, capacity, density, and scalability.
- Ensures uninterrupted operations with redundant power supplies, modular hot-swappable components, and seamless failover mechanisms.
- Supports advanced redundancy protocols including STP/RSTP/MSTP, VRRP, ring network protection, dual uplink, and LACP.
- Doubles performance by eliminating STP blocking and maximizing link utilization.
- Offers ISSU and GR for zero-downtime software upgrades and graceful restarts.
- Optimizes resource utilization and enhances network performance with Virtual Switch System (VSS) technology.
- Virtual stacking supports up to 10 XQS-3126 in a single logical stack for unified management, monitoring and configuration.



Hilbert 5-Port Gigabit PoE Smart Lite Switch

GES-2105P

- 4 PoE-Plus Gigabit Ethernet ports supports PoE Watchdog
- Total PoE power budget: 60W, up to 30W per port
- IEEE 802.3af/at PoE compliant to simplify deployment and installation
- 1000Mbps full-duplex, 10/100Mbps full/half-duplex, auto-negotiation, auto-MDI/MDIX
- Supports 2K MAC address auto-learning and auto-aging
- 9K jumbo frames to increase data transfer rates
- IP Multicast Filtering through IGMP Snooping V1 / V2
- 802.1Q tag-based VLAN allows network segmentation to enhance performance and security
- IEEE 802.1p QoS with 4 priority queues
- Supports unknown unicast / broadcast / multicast storm control
- Minimize carbon footprint with advanced energy efficient technology (IEEE 802.3az)
- 4KV surge protection, 6KV contact / 8KV air ESD protection
- Web-based and smart lite Management
- Supports LevelOne IP Locator for easier IP management.



Hilbert 8-Port Gigabit PoE Smart Lite Switch

GES-2108P

- 8 PoE-Plus Gigabit Ethernet ports supports PoE Watchdog
- Total PoE power budget: 112.8W, up to 30W per port
- IEEE 802.3af/at PoE compliant to simplify deployment and installation
- 1000Mbps full-duplex, 10/100Mbps full/half-duplex, auto-negotiation, auto-MDI/MDIX
- Supports 4K MAC address auto-learning and auto-aging
- 9K jumbo frames to increase data transfer rates
- IP Multicast Filtering through IGMP Snooping V1 / V2
- 802.1Q tag-based VLAN allows network segmentation to enhance performance and security
- IEEE 802.1p QoS with 4 priority queues
- Supports unknown unicast / broadcast / multicast storm control
- Minimize carbon footprint with advanced energy efficient technology (IEEE 802.3az)
- 4KV surge protection, 6KV contact / 8KV air ESD protection
- Web-based and smart lite Management
- Supports LevelOne IP Locator for easier IP management.



Hilbert 10-Port Gigabit PoE Smart Lite Switch

GES-2110P

- 8 PoE-Plus Gigabit Ethernet ports supports PoE Watchdog and 2 Gigabit SFP slots
- Total PoE power budget: 130W, up to 30W per port
- IEEE 802.3af/at PoE compliant to simplify deployment and installation
- Supports 8K MAC address auto-learning and auto-aging
- 9K jumbo frames to increase data transfer rates
- IP Multicast Filtering through IGMP Snooping V1 / V2
- 802.1Q tag-based VLAN allows network segmentation to enhance performance and security
- IEEE 802.1p QoS with 4 priority queues
- Supports unknown unicast / broadcast / multicast storm control
- Minimize carbon footprint with advanced energy efficient technology (IEEE 802.3az)
- 4KV surge protection, 6KV contact / 8KV air ESD protection
- Web-based and smart lite Management
- Supports LevelOne IP Locator for easier IP management.



Hilbert 18-Port Gigabit PoE Smart Lite Switch

GES-2118P

- 16 PoE-Plus Gigabit Ethernet ports supports PoE Watchdog and 2 Gigabit SFP slots
- Total PoE power budget: 230W, up to 30W per port
- IEEE 802.3af/at PoE compliant to simplify deployment and installation
- Supports 8K MAC address auto-learning and auto-aging
- 9K jumbo frames to increase data transfer rates
- IP Multicast Filtering through IGMP Snooping V1 / V2
- 802.1Q tag-based VLAN allows network segmentation to enhance performance and security
- IEEE 802.1p QoS with 4 priority queues
- Supports unknown unicast / broadcast / multicast storm control
- Minimize carbon footprint with advanced energy efficient technology (IEEE 802.3az)
- 4KV surge protection, 6KV contact / 8KV air ESD protection
- Web-based and smart lite Management
- Supports LevelOne IP Locator for easier IP management.



Hilbert 28-Port Gigabit PoE Smart Lite Switch

GES-2128P

- 24 PoE-Plus Gigabit Ethernet ports supports PoE Watchdog and 4 Gigabit SFP/RJ45 Combo
- Total PoE power budget: 380W, up to 30W per port
- IEEE 802.3af/at PoE compliant to simplify deployment and installation
- Supports 8K MAC address auto-learning and auto-aging
- 9K jumbo frames to increase data transfer rates
- IP Multicast Filtering through IGMP Snooping V1 / V2
- 802.1Q tag-based VLAN allows network segmentation to enhance performance and security
- IEEE 802.1p QoS with 4 priority queues
- Supports unknown unicast / broadcast / multicast storm control
- Minimize carbon footprint with advanced energy efficient technology (IEEE 802.3az)
- 4KV surge protection, 6KV contact / 8KV air ESD protection
- Web-based and smart lite Management
- Supports LevelOne IP Locator for easier IP management.



Hilbert 8-Port Gigabit Smart Lite Switch

GES-2108

- 8 Gigabit Ethernet ports
- 1000Mbps full-duplex, 10/100Mbps full/half-duplex, auto-negotiation, auto-MDI/MDIX
- Supports 4K MAC address auto-learning and auto-aging
- 9K jumbo frames to increase data transfer rates
- IP Multicast Filtering through IGMP Snooping V1 / V2
- 802.1Q tag-based VLAN allows network segmentation to enhance performance and security
- IEEE 802.1p QoS with 4 priority queues
- Supports unknown unicast / broadcast / multicast storm control
- Minimize carbon footprint with advanced energy efficient technology (IEEE 802.3az)
- 4KV surge protection, 6KV contact / 8KV air ESD protection
- Web-based and smart lite Management
- Supports LevelOne IP Locator for easier IP management.



Hilbert 10-Port Gigabit Smart Lite Switch

GES-2110

- 8 Gigabit Ethernet ports and 2 Gigabit SFP slots
- Supports 8K MAC address auto-learning and auto-aging
- 9K jumbo frames to increase data transfer rates
- IP Multicast Filtering through IGMP Snooping V1 / V2
- 802.1Q tag-based VLAN allows network segmentation to enhance performance and security
- IEEE 802.1p QoS with 4 priority queues
- Supports unknown unicast / broadcast / multicast storm control
- Minimize carbon footprint with advanced energy efficient technology (IEEE 802.3az)
- 4KV surge protection, 6KV contact / 8KV air ESD protection
- Web-based and smart lite Management
- Supports LevelOne IP Locator for easier IP management.



Hilbert 18-Port Gigabit Smart Lite Switch

GES-2118

- 16 Gigabit Ethernet ports and 2 Gigabit SFP slots
- Supports 8K MAC address auto-learning and auto-aging
- 9K jumbo frames to increase data transfer rates
- IP Multicast Filtering through IGMP Snooping V1 / V2
- 802.1Q tag-based VLAN allows network segmentation to enhance performance and security
- IEEE 802.1p QoS with 4 priority queues
- Supports unknown unicast / broadcast / multicast storm control
- Minimize carbon footprint with advanced energy efficient technology (IEEE 802.3az)
- 4KV surge protection, 6KV contact / 8KV air ESD protection
- Web-based and smart lite Management
- Supports LevelOne IP Locator for easier IP management.



Hilbert 26-Port Gigabit Smart Lite Switch

GES-2126

- 24 Gigabit Ethernet ports and 2 Gigabit SFP slots
- Supports 8K MAC address auto-learning and auto-aging
- 9K jumbo frames to increase data transfer rates
- IP Multicast Filtering through IGMP Snooping V1 / V2
- 802.1Q tag-based VLAN allows network segmentation to enhance performance and security
- IEEE 802.1p QoS with 4 priority queues
- Supports unknown unicast / broadcast / multicast storm control
- Minimize carbon footprint with advanced energy efficient technology (IEEE 802.3az)
- 4KV surge protection, 6KV contact / 8KV air ESD protection
- Web-based and smart lite Management
- Supports LevelOne IP Locator for easier IP management.



Hilbert 28-Port Gigabit Smart Lite Switch

GES-2128

- 24 Gigabit Ethernet ports and 4 Gigabit SFP/RJ45 Combo
- Supports 8K MAC address auto-learning and auto-aging
- 9K jumbo frames to increase data transfer rates
- IP Multicast Filtering through IGMP Snooping V1 / V2
- 802.1Q tag-based VLAN allows network segmentation to enhance performance and security
- IEEE 802.1p QoS with 4 priority queues
- Supports unknown unicast / broadcast / multicast storm control
- Minimize carbon footprint with advanced energy efficient technology (IEEE 802.3az)
- 4KV surge protection, 6KV contact / 8KV air ESD protection
- Web-based and smart lite Management
- Supports LevelOne IP Locator for easier IP management.



Hilbert 8-Port 10-inch Gigabit Smart Lite Switch

GES-2208

- 1000Mbps full-duplex, 10/100Mbps full/half-duplex, auto-negotiation, auto-MDI/MDIX
- Supports 4K MAC address auto-learning and auto-aging
- 9K jumbo frames to increase data transfer rates
- IP Multicast Filtering through IGMP Snooping V1 / V2
- 802.1Q tag-based VLAN allows network segmentation to enhance performance and security
- IEEE 802.1p QoS with 4 priority queues
- Supports unknown unicast / broadcast / multicast storm control
- Minimize carbon footprint with advanced energy efficient technology (IEEE 802.3az)
- 4KV surge protection, 6KV contact / 8KV air ESD protection
- Support Dumb and Web Smart two mode by dip switches
- Web-based and smart lite Management
- Supports LevelOne IP Locator for easier IP management.



Hilbert 16-Port 10-inch Gigabit Smart Lite Switch

GES-2216

- 1000Mbps full-duplex, 10/100Mbps full/half-duplex, auto-negotiation, auto-MDI/MDIX
- Supports 8K MAC address auto-learning and auto-aging
- 10K jumbo frames to increase data transfer rates
- IP Multicast Filtering through IGMP Snooping V1 / V2
- 802.1Q tag-based VLAN allows network segmentation to enhance performance and security
- IEEE 802.1p QoS with 4 priority queues
- Supports unknown unicast / broadcast / multicast storm control
- Minimize carbon footprint with advanced energy efficient technology (IEEE 802.3az)
- 4KV surge protection, 6KV contact / 8KV air ESD protection
- Support Dumb and Web Smart two mode by dip switches
- Web-based and smart lite Management
- Supports LevelOne IP Locator for easier IP management.



Hilbert 5-Port Industrial Gigabit Smart Lite Switch

IGS-2105

- 5 Gigabit Ethernet ports
- 1000Mbps full-duplex, 10/100Mbps full/half-duplex, auto-negotiation, auto-MDI/MDIX
- Supports 2K MAC address auto-learning and auto-aging
- 9K jumbo frames to increase data transfer rates
- IP Multicast Filtering through IGMP Snooping V1 / V2
- 802.1Q tag-based VLAN allows network segmentation to enhance performance and security
- IEEE 802.1p QoS with 4 priority queues
- Supports unknown unicast / broadcast / multicast storm control
- Minimize carbon footprint with advanced energy efficient technology (IEEE 802.3az)
- -40°C to 75°C operating temperature range
- Redundant power inputs with Terminal Block
- 4KV surge protection, 6KV contact / 8KV air ESD protection
- Web-based and smart lite Management
- Supports LevelOne IP Locator for easier IP management



Hilbert 5-Port Industrial Gigabit PoE Smart Lite Switch

IGS-2105P

- 4 PoE-Plus Gigabit Ethernet ports supports PoE Watchdog
- IEEE 802.3af/at PoE compliant to simplify deployment and installation
- 1000Mbps full-duplex, 10/100Mbps full/half-duplex, auto-negotiation, auto-MDI/MDIX
- Supports 2K MAC address auto-learning and auto-aging
- 9K jumbo frames to increase data transfer rates
- IP Multicast Filtering through IGMP Snooping V1 / V2
- 802.1Q tag-based VLAN allows network segmentation to enhance performance and security
- IEEE 802.1p QoS with 4 priority queues
- Supports unknown unicast / broadcast / multicast storm control
- Minimize carbon footprint with advanced energy efficient technology (IEEE 802.3az)
- -40°C to 75°C operating temperature range
- Redundant power inputs with Terminal Block
- 4KV surge protection, 6KV contact / 8KV air ESD protection
- Web-based and smart lite Management
- Supports LevelOne IP Locator for easier IP management



Hilbert 6-Port Industrial Gigabit Smart Lite Switch

IGS-2106

- 4 Gigabit Ethernet ports and 2 Gigabit SFP slots
- 1000Mbps full-duplex, 10/100Mbps full/half-duplex, auto-negotiation, auto-MDI/MDIX
- Supports 2K MAC address auto-learning and auto-aging
- 9K jumbo frames to increase data transfer rates
- IP Multicast Filtering through IGMP Snooping V1 / V2
- 802.1Q tag-based VLAN allows network segmentation to enhance performance and security
- IEEE 802.1p QoS with 4 priority queues
- Supports unknown unicast / broadcast / multicast storm control
- Minimize carbon footprint with advanced energy efficient technology (IEEE 802.3az)
- -40°C to 75°C operating temperature range
- Redundant power inputs with Terminal Block
- 4KV surge protection, 6KV contact / 8KV air ESD protection
- Web-based and smart lite Management
- Supports LevelOne IP Locator for easier IP management"



Hilbert 6-Port Industrial Gigabit PoE Smart Lite Switch

IGS-2106P

- 4 PoE-Plus Gigabit Ethernet ports supports PoE Watchdog and 2 Gigabit SFP slots
- IEEE 802.3af/at PoE compliant to simplify deployment and installation
- 1000Mbps full-duplex, 10/100Mbps full/half-duplex, auto-negotiation, auto-MDI/MDIX
- Supports 2K MAC address auto-learning and auto-aging
- 9K jumbo frames to increase data transfer rates
- IP Multicast Filtering through IGMP Snooping V1 / V2
- 802.1Q tag-based VLAN allows network segmentation to enhance performance and security
- IEEE 802.1p QoS with 4 priority queues
- Supports unknown unicast / broadcast / multicast storm control
- Minimize carbon footprint with advanced energy efficient technology (IEEE 802.3az)
- -40°C to 75°C operating temperature range
- Redundant power inputs with Terminal Block
- 4KV surge protection, 6KV contact / 8KV air ESD protection
- Web-based and smart lite Management
- Supports LevelOne IP Locator for easier IP management."



Hilbert 8-Port Industrial Gigabit Smart Lite Switch

IGS-2108

- 8 Gigabit Ethernet ports
- 1000Mbps full-duplex, 10/100Mbps full/half-duplex, auto-negotiation, auto-MDI/MDIX
- Supports 4K MAC address auto-learning and auto-aging
- 9K jumbo frames to increase data transfer rates
- IP Multicast Filtering through IGMP Snooping V1 / V2
- 802.1Q tag-based VLAN allows network segmentation to enhance performance and security
- IEEE 802.1p QoS with 4 priority queues
- Supports unknown unicast / broadcast / multicast storm control
- Minimize carbon footprint with advanced energy efficient technology (IEEE 802.3az)
- -40°C to 75°C operating temperature range
- Redundant power inputs with Terminal Block
- 4KV surge protection, 6KV contact / 8KV air ESD protection
- Web-based and smart lite Management
- Supports LevelOne IP Locator for easier IP management



Hilbert 8-Port Industrial Gigabit PoE Smart Lite Switch

IGS-2108P

- 8 PoE-Plus Gigabit Ethernet ports supports PoE Watchdog
- IEEE 802.3af/at PoE compliant to simplify deployment and installation
- 1000Mbps full-duplex, 10/100Mbps full/half-duplex, auto-negotiation, auto-MDI/MDIX
- Supports 4K MAC address auto-learning and auto-aging
- 9K jumbo frames to increase data transfer rates
- IP Multicast Filtering through IGMP Snooping V1 / V2
- 802.1Q tag-based VLAN allows network segmentation to enhance performance and security
- IEEE 802.1p QoS with 4 priority queues
- Supports unknown unicast / broadcast / multicast storm control
- Minimize carbon footprint with advanced energy efficient technology (IEEE 802.3az)
- -40°C to 75°C operating temperature range
- Redundant power inputs with Terminal Block
- 4KV surge protection, 6KV contact / 8KV air ESD protection
- Web-based and smart lite Management
- Supports LevelOne IP Locator for easier IP management



Hilbert 10-Port Industrial Gigabit Smart Lite Switch

IGS-2110

- 8 Gigabit Ethernet ports and 2 Gigabit SFP slots
- 1000Mbps full-duplex, 10/100Mbps full/half-duplex, auto-negotiation, auto-MDI/MDIX
- Supports 4K MAC address auto-learning and auto-aging
- 9K jumbo frames to increase data transfer rates
- IP Multicast Filtering through IGMP Snooping V1 / V2
- 802.1Q tag-based VLAN allows network segmentation to enhance performance and security
- IEEE 802.1p QoS with 4 priority queues
- Supports unknown unicast / broadcast / multicast storm control
- Minimize carbon footprint with advanced energy efficient technology (IEEE 802.3az)
- -40°C to 75°C operating temperature range
- Redundant power inputs with Terminal Block
- 4KV surge protection, 6KV contact / 8KV air ESD protection
- Web-based and smart lite Management
- Supports LevelOne IP Locator for easier IP management



Hilbert 28-Port Industrial Gigabit Smart Lite Switch

IGS-2128

- 24 Gigabit Ethernet ports and 4 Gigabit SFP/RJ45 Combo
- Web-based and smart lite Management
- Supports LevelOne IP Locator for easier IP management.
- Supports 8K MAC address auto-learning and auto-aging
- 9K jumbo frames to increase data transfer rates
- IP Multicast Filtering through IGMP Snooping V1 / V2
- 802.1Q tag-based VLAN allows network segmentation to enhance performance and security
- IEEE 802.1p QoS with 4 priority queues
- Supports unknown unicast / broadcast / multicast storm control
- Minimize carbon footprint with advanced energy efficient technology (IEEE 802.3az)
- -40°C to 75°C operating temperature range
- 4KV surge protection, 6KV contact / 8KV air ESD protection
- 19-inch rackmount kit included



10-Port L2 Managed Gigabit Switch

GEL-1061

- 8 Gigabit Ethernet ports and 2 Gigabit SFP slots
- IEEE 802.1d/w/s Spanning Tree Protocol (STP) and port mirroring
- IEEE 802.3ad LACP for auto port aggregation
- Supports Access Control List (ACL) authentication of up to 512 entries and port-based security with IEEE802.1X
- IP Multicast Filtering through IGMP Snooping V1 / V2 / V3
- Supports port-based VLAN, IEEE 802.1Q VLAN Tagging
- Supports IPv4/IPv6 network operation
- IEEE 802.1p QoS with 8 priority queues



26-Port L2 Managed Gigabit Switch

GTL-2661

- 24 Gigabit Ethernet ports and 2 10-Gigabit SFP+ slots
- IEEE 802.3ad LACP for auto port aggregation
- IEEE 802.1d/w/s Spanning Tree Protocol (STP) and port mirroring
- Provides QoS control based on IP DSCP for advanced traffic prioritization and bandwidth management
- MLD, Telnet, SNMP V1, V2c & V3, RMON, Web Browser, and TFTP Management
- Dynamic ARP Inspection (DAI) protects switches against ARP spoofing
- Minimize carbon footprint with advanced energy efficient technology (IEEE 802.3az)
- Supports IPv4/IPv6 network operation



28-Port L3 Lite Managed Gigabit Fiber Switch

GTL-2872

- 20 Gigabit SFP Slots, 4 Gigabit SFP/RJ45 Combo and 4 10-Gigabit SFP+ Slots
- IEEE 802.3ad LACP for auto port aggregation
- Dynamic ARP Inspection (DAI) protects switches against ARP spoofing
- Supports IPv4/IPv6 network operation
- MLD, Telnet, SNMP V1, V2c & V3, RMON, Web Browser, and TFTP Management
- Support Operations, Administration, and Maintenance (OAM) mechanisms
- Supports DDMI SFP transceiver
- Redundant power inputs with Terminal Block and AC Jack



28-Port Stackable L3 Lite Managed Gigabit Switch

GTL-2881

- 24 Gigabit Ethernet Ports and 2 10-Gigabit SFP+ Slot with 1 Module Slot for 2 10-Gigabit SFP+ Slots
- Dynamic ARP Inspection (DAI) protects switches against ARP spoofing
- Supports up to 8 switches in one stack
- Supports Operations, Administration, and Maintenance (OAM) mechanisms
- Ethernet Ring Protection Switching (ERPS) for Ethernet ring topologies with sub-50 ms failover capabilities
- IEEE 802.1d/w Spanning Tree Protocol (STP) and port mirroring
- IEEE 802.3ad LACP for auto port aggregation
- Supports port-based VLAN, IEEE 802.1Q VLAN Tagging
- QoS control for traffic prioritization and bandwidth management



28-Port Stackable L3 Lite Managed Gigabit Fiber Optic Switch

GTL-2882

- 22 Gigabit SFP Slots, 2 Gigabit SFP/RJ45 Combo and 2 10-Gigabit SFP+ Slots with 1 Module Slot for 2 10-Gigabit SFP+ Slots
- Dynamic ARP Inspection (DAI) protects switches against ARP spoofing
- Supports up to 8 switches in one stack
- Supports Operations, Administration, and Maintenance (OAM) mechanisms
- IEEE 802.1d/w Spanning Tree Protocol (STP) and port mirroring
- Supports port-based VLAN, IEEE 802.1Q VLAN Tagging
- QoS control for traffic prioritization and bandwidth management
- Supports IPv4/IPv6 network operation



28-Port Stackable L3 Managed Gigabit Switch

GTL-2891

- 24 Gigabit Ethernet Ports and 2 10-Gigabit SFP+ Slot with 1 Module Slot for 2 10-Gigabit SFP+ Slots
- Dynamic ARP Inspection (DAI) protects switches against ARP spoofing
- Supports up to 8 switches in one stack
- Supports Operations, Administration, and Maintenance (OAM) mechanisms
- Ethernet Ring Protection Switching (ERPS) for Ethernet ring topologies with sub-50 ms failover capabilities
- IEEE 802.1d/w Spanning Tree Protocol (STP) and port mirroring
- IEEE 802.3ad LACP for auto port aggregation
- Supports port-based VLAN, IEEE 802.1Q VLAN Tagging
- QoS control for traffic prioritization and bandwidth management



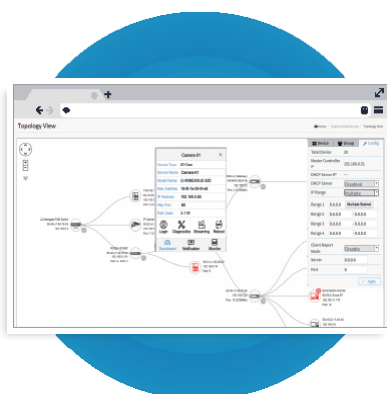
DMS EMBEDDED IN TURING SWITCHES

DMS is an Intelligent Management Tool Embedded in Switches to Intuitively Help IT/TS Reducing Support Cost/Time/Effort. No extra Software or Server needed!



EASY ACCESS FROM ANY DEVICE

All devices connected to the switches can be discovered and displayed by DMS automatically using standard networking protocols such as LLDP, UPnP, ONVIF, Bonjour, etc.



CONTROL EVERYTHING INSIDE YOUR BROWSER

- Remotely power down IP cameras, NVRs or any other PoE device.
- Remotely identify where exactly broken cables are located.
- Detect abnormal traffic issues on IP cameras and NVRs.
- Monitor devices status intuitively, e.g. link up, PoE power, traffic, etc.
- Configure VLAN/QoS intuitively for better solution quality/reliability.
- Supports up to 256 devices within up to 4 subnets.

LOG IN FROM ANY DEVICE

Use your PC/Mac or any Smartphone or Tablet to access the DMS Interface directly in your Browser



REMOTE POWER CONTROL

Power down or up IP Cameras, NVRs or any other PoE device easily from the DMS in your browser.



ABNORMAL TRAFFIC

Detect abnormal traffic issues on IP cameras or NVRs.



EMBEDDED IN TURING SWITCHES

No extra Software needed. No additional Server required. All you need is one of our Turing Switches with the DMS included.

LOCATE BROKEN CABLES

Remotely identify where exactly a broken cable is located.



ADVANTAGES OVER COMMON NETWORK MANAGEMENT SYSTEMS



NO EXTRA
SERVER COST



NO TRAINING
REQUIRED



NO ADDITIONAL
SOFTWARE NEEDED



WORKS WITH 3RD PARTY
IP DEVICES

IS YOUR NETWORK MANAGEMENT INTELLIGENT?

Make the most out of your network.
Save time and money by reducing the
effort for technical support and IT.

**With our
DMS on TURING SWITCHES.**





**26-Port Web Smart
Gigabit PoE Switch**
GEP-2651

- 24 Gigabit PoE ports and 2 Gigabit RJ45/SFP combo ports
- QoS control for traffic prioritization and bandwidth management
- Supports IPv4/IPv6 network operation
- IEEE 802.1d/w/s Spanning Tree Protocol (STP) and port mirroring
- IP Multicast Filtering through IGMP Snooping V1 / V2 / V3
- Supports port-based VLAN, IEEE 802.1Q VLAN Tagging
- Total PoE power budget: 185W, up to 30W per port
- The built-in Device Management System (DMS) provides management, diagnostics and monitoring to connected network components and devices



**26-Port L3 Lite
Managed Gigabit
Switch**
GEL-2681

- 24 Gigabit ports and 2 Gigabit RJ45/SFP combo ports
- QoS control for traffic prioritization and bandwidth management
- Supports IPv4/IPv6 network operation
- IEEE 802.3ad LACP for auto port aggregation
- Supports VLAN (Port-based, Protocol-based, Private, Q-in-Q, Tag-based) and GVRP
- IEEE 802.1d/w/s Spanning Tree Protocol (STP) and port mirroring
- IP Multicast Filtering through IGMP Snooping V1 / V2 / V3
- The built-in Device Management System (DMS) provides management, diagnostics and monitoring to connected network components and devices



**26-Port L3 Lite
Managed Gigabit
PoE Switch**
GEP-2681

- 24 Gigabit PoE ports and 2 Gigabit RJ45/SFP combo ports
- QoS control for traffic prioritization and bandwidth management
- Supports IPv4/IPv6 network operation
- IEEE 802.1d/w/s Spanning Tree Protocol (STP) and port mirroring
- IP Multicast Filtering through IGMP Snooping V1 / V2 / V3
- Supports Universal Plug and Play (UPnP) for auto-configure network devices
- Total PoE power budget: 185W, up to 30W per port
- The built-in Device Management System (DMS) provides management, diagnostics and monitoring to connected network components and devices



**26-Port L3 Lite
Managed Gigabit
PoE Switch**
GEP-2682

- 24 Gigabit PoE ports and 2 Gigabit RJ45/SFP combo ports
- QoS control for traffic prioritization and bandwidth management
- DHCP Client/Server
- Supports IPv4/IPv6 network operation
- Minimize carbon footprint with advanced energy efficient technology (IEEE 802.3az)
- IEEE 802.1d/w/s Spanning Tree Protocol (STP) and port mirroring
- IP Multicast Filtering through IGMP Snooping V1 / V2 / V3
- IEEE 802.3ad LACP for auto port aggregation
- Total PoE power budget: 370W, up to 30W per port
- The built-in Device Management System (DMS) provides management, diagnostics and monitoring to connected network components and devices



28-Port L3 Lite Managed Gigabit PoE Switch

GTP-2881

- 24 Gigabit PoE ports and 4 10-Gigabit SFP slots
- Total PoE power budget: 185W, up to 30W per port
- Supports Access Control List (ACL) authentication of up to 512 entries and port-based security with IEEE802.1X
- Minimize carbon footprint with advanced energy efficient technology (IEEE 802.3az)
- Supports port-based VLAN, IEEE 802.1Q VLAN Tagging and GVRP
- Supports IPv4/IPv6 network operation
- IP Multicast Filtering through IGMP Snooping V1 / V2 / V3
- IEEE 802.3ad LACP for auto port aggregation
- The built-in Device Management System (DMS) provides management, diagnostics and monitoring to connected network components and devices



12-Port L3 Lite Managed Gigabit PoE Industrial Switch

IGP-1271

- 8 Gigabit PoE ports and 4 Gigabit SFP slots
- Total PoE power budget: 240W, up to 30W per port
- Supports IPv4/IPv6 network operation
- Minimize carbon footprint with advanced energy efficient technology (IEEE 802.3az)
- Support Operations, Administration, and Maintenance (OAM) mechanisms
- Ethernet Ring Protection Switching (ERPS) for Ethernet ring topologies with sub-50 ms failover capabilities
- -40°C to 75°C operating temperature range
- Redundant power inputs with Terminal Block
- The built-in Device Management System (DMS) provides management, diagnostics and monitoring to connected network components and devices



12-Port L3 Lite Managed Gigabit Industrial Switch

IGU-1271

- 8 Gigabit Ethernet ports and 4 Gigabit SFP slots
- Supports IPv4/IPv6 network operation
- Minimize carbon footprint with advanced energy efficient technology (IEEE 802.3az)
- Support Operations, Administration, and Maintenance (OAM) mechanisms
- Ethernet Ring Protection Switching (ERPS) for Ethernet ring topologies with sub-50 ms failover capabilities
- -40°C to 75°C operating temperature range
- Redundant power inputs with Terminal Block
- The built-in Device Management System (DMS) provides management, diagnostics and monitoring to connected network components and devices



PoE Injector
POI-2002

- Up to 15.4W of PoE Power
- Minimize the need for a bulky power adapter and power line
- Delivering power and data to equipment via a single Ethernet cable
- Internal power supply
- High safety with surge protection
- Remote power feeding up to 100 meters
- PnP, Light Weight and compact size
- Unique interlocking feature for easy installation



Gigabit PoE Injector
POI-3000

- IEEE 802.3af/at PoE PSE with 30W power budget
- Auto-detection and protection of non-standard PoE devices
- Unique interlocking feature for easy installation
- 10/100/1000Mbps wire speed transmission and reception



Gigabit PoE Injector
POI-3004

- Remove the need for a bulky power adapter and power line
- Delivers power and data to equipment via a single Ethernet cable
- Remote power feeding up to 100m
- Unique interlocking feature for easy installation
- Surge protected to enhance safety
- Simple Plug and Play installation
- Compact, lightweight design
- Total PoE power budget: 30W, up to 30W per port



PoE Injector
POI-2012

- IEEE 802.3af/at PoE PSE with 15.4W power budget
- Remove the need for a bulky power adapter and power line
- Delivers power and data to equipment via a single Ethernet cable
- Built-in power supply
- Extends PoE connection for another 100 meters
- Unique interlocking feature for easy installation



**Gigabit PoE Injector,
802.3at/af PoE**
POI-3010

- IEEE 802.3af/at PoE PSE with 30W power budget
- Auto-detection and protection of non-standard PoE devices
- Unique interlocking feature for easy installation
- 10/100/1000Mbps wire speed transmission and reception



Gigabit PoE Injector
POI-3014

- Remove the need for a bulky power adapter and power line
- Delivers power and data to equipment via a single Ethernet cable
- Remote power feeding up to 100m
- Unique interlocking feature for easy installation
- Surge protected to enhance safety
- Simple Plug and Play installation
- Compact, lightweight design
- Total PoE power budget: 30W, up to 30W per port



Gigabit PoE Injector
POI-5001

- Auto-detection and protection of non-standard PoE devices
- IEEE 802.3af/at PoE compliant to simplify deployment and installation
- Total PoE power budget: 60W, up to 60W per port



**Gigabit PoE Injector,
802.3 af/at/bt, 90W**
POI-5003

- Auto-detection and protection of non-standard PoE devices
- IEEE 802.3af/at/bt PoE compliant to simplify deployment and installation
- 10/100/1000Mbps wire speed transmission and reception
- Total PoE power budget: 90W,



**IEEE 802.3bt
Gigabit Injector**
POI-5002

- Up to 60W of PoE Power Feeding on 4-pairs
- IEEE 802.3bt Compliant
- IEEE 802.3at/af backward compatible
- Compatible with IEEE 802.3af or Legacy PoE applications
- Safe on Low Power Devices Receive Only the Power They Need
- Safe and Reliable Power to WLAN Access Points
- Automatic Detection and Protection of Non-standard Ethernet Terminals
- Supports 10/100/1000Base-T LAN environment



**Industrial Gigabit
POE Injector**
IGP-0102

- Remove the need for a bulky power adapter and separate power line
- Delivers power and data to equipment via a single Ethernet cable
- Remote power feeding up to 100m
- Unique interlocking feature for easy installation
- Total PoE power budget: 36W



**Industrial Gigabit
PoE Injector**
IGP-0101

- PoE ports can support the IEEE 802.3at standard and power up 30W devices
- 1000Mbps full-duplex, 10/100Mbps full/half-duplex, auto-negotiation, auto-MDI/MDIX
- -40°C to 75°C operating temperature range
- Provides DIN-rail, wall or desktop mounting
- IP30 metal case
- Redundant power inputs with Terminal Block



**16-Port High Power
PoE Midspan Hub**
POH-1620

- Complies with IEEE802.3af,IEEE802.3at standard;
- Auto-detection for IEEE802.3af/at receiving end;
- Support 10/100/1000 Base-T application;
- Total PoE power budget: 400W, up to 30W per port
- Maximum transmission distance 100m



PoE Injector
POI-4000

- 56 Watt High-Power PSE Power Injector
- Sends Power over Ethernet to remote devices
- Ethernet 100Mbps Wire Speed
- Simple to install-plug & play
- Power Protection: OCP, OVP



Fast Ethernet PoE Splitter
POS-1002

- IEEE 802.3af compliant
- Converts non-PoE devices with Power over Ethernet support
- DIP switch for 5V, 9V, and 12V adjustable output power
- Delivers power and data via a single Ethernet cable
- Eliminates the need for a bulky power adapter and powerline
- Compatible with Wireless Router, AP, Network Camera, Print Server, Converter
- Light weight and compact size
- Provides interchangeable tips



High Power PoE Gigabit Splitter
POS-3000

- Auto-detection and protection of non-standard PoE devices
- 10/100/1000Mbps wire speed transmission and reception
- Automatically detects PoE terminals and supplies inline power
- Integrates Non-PoE devices with Power Over Ethernet support
- Safeguards network device with short circuit protection
- Reduce installation and network equipment costs
- Adjustable DIP switch for 5V, 12V, or 18V output
- Compact splitter supports Gigabit speeds



Gigabit IEEE 802.3bt PoE Splitter
POS-5000

- 10/100/1000Mbps wire speed transmission and reception
- Integrates Non-PoE devices with Power Over Ethernet support
- Safeguards network device with short circuit protection
- Reduce installation and network equipment costs
- Adjustable DIP switch for 12V, or 24V output
- Compact splitter supports Gigabit speeds
- Supplies power up to 60 watts



Gigabit PoE bt to USB-C PD 3.0 Splitter
POS-5001

- 10/100/1000Mbps wire speed transmission and reception
- Integrates Non-PoE devices with Power Over Ethernet support
- Safeguards network device with short circuit protection
- Reduce installation and network equipment costs
- Compact splitter supports Gigabit speeds
- Supplies power up to 45 watts



PoE Repeater
POR-0100

- Forwards 802.3af/High-Power PoE to remote device
- High Power Midspan PoE compliant to simplify deployment and installation
- No additional power supply required
- Simple Plug and Play installation
- Multiple PoE repeaters can be deployed by daisy chain to extend range



PoE Repeater
POR-0101

- Forwards 802.3af/802.3at/High-Power PoE to remote device
- Simple Plug and Play installation
- No additional power supply required



1-Port RJ-45 Gigabit PoE Repeater
POR-0111

- Forwards 802.3af/802.3at/High-Power PoE to remote device
- Extends PoE connection for another 100 meters
- No additional power supply required
- Simple Plug and Play installation
- Cascaded to 400 Meter



PoE Repeater
POR-0102

- Forwards 802.3af/High-Power PoE to remote device
- High Power Midspan PoE compliant to simplify deployment and installation
- Built-in 2 PoE ports for PoE devices
- Simple Plug and Play installation
- No additional power supply required
- Multiple PoE repeaters can be deployed by daisy chain to extend range



PoE Repeater
POR-0103

- Forwards 802.3af/802.3at/High-Power PoE to remote device
- Built-in 2 PoE ports for PoE devices
- Simple Plug and Play installation
- No additional power supply required



PoE Repeater
POR-0200

- Forwards 802.3af/802.3at/High-Power PoE to remote device
- High Power Midspan PoE compliant to simplify deployment and installation
- Built-in 2 output ports for 1 PoE and 1 non-PoE devices
- Simple Plug and Play installation
- No additional power supply required
- Multiple PoE repeaters can be deployed by daisy chain to extend range



PoE Repeater
POR-0202

- Forwards 802.3af/802.3at/High-Power PoE to remote device
- High Power Midspan PoE compliant to simplify deployment and installation
- Built-in 2 PoE ports for PoE devices
- Simple Plug and Play installation
- No additional power supply required
- Multiple PoE repeaters can be deployed by daisy chain to extend range



Gigabit PoE Repeater
POR-0120

- Forwards 802.3af/High-Power PoE to remote device
- High Power Midspan PoE compliant to simplify deployment and installation
- Built-in 2 output ports for 1 PoE and 1 non-PoE devices
- Simple Plug and Play installation
- No additional power supply required
- Multiple PoE repeaters can be deployed by daisy chain to extend range



Gigabit PoE Repeater
POR-0122

- Forwards 802.3af/High-Power PoE to remote device
- High Power Midspan PoE compliant to simplify deployment and installation
- Built-in 2 PoE ports for PoE devices
- Simple Plug and Play installation
- No additional power supply required
- Multiple PoE repeaters can be deployed by daisy chain to extend range



Gigabit PoE Repeater
POR-0222

- Forwards 802.3af/802.3at/High-Power PoE to remote device
- High Power Midspan PoE compliant to simplify deployment and installation
- Built-in 2 PoE ports for PoE devices
- Simple Plug and Play installation
- No additional power supply required
- Multiple PoE repeaters can be deployed by daisy chain to extend range



PoE Repeater
POR-1100

- Forwards 802.3af/High-Power PoE to remote device
- High Power Midspan PoE compliant to simplify deployment and installation
- Weatherproof IP65-rated housing
- No additional power supply required
- Simple Plug and Play installation
- Multiple PoE repeaters can be deployed by daisy chain to extend range



PoE Repeater
POR-1102

- Forwards 802.3af/High-Power PoE to remote device
- High Power Midspan PoE compliant to simplify deployment and installation
- Built-in 2 PoE ports for PoE devices
- Weatherproof IP65-rated housing
- No additional power supply required
- Simple Plug and Play installation
- Multiple PoE repeaters can be deployed by daisy chain to extend range



PoE Repeater
POR-1200

- Forwards 802.3af/802.3at/High-Power PoE to remote device
- High Power Midspan PoE compliant to simplify deployment and installation
- Built-in 2 output ports for 1 PoE and 1 non-PoE devices
- Weatherproof IP65-rated housing
- Simple Plug and Play installation
- No additional power supply required
- Multiple PoE repeaters can be deployed by daisy chain to extend range



PoE Repeater
POR-1202

- Forwards 802.3af/802.3at/High-Power PoE to remote device
- High Power Midspan PoE compliant to simplify deployment and installation
- Built-in 2 PoE ports for PoE devices
- Weatherproof IP65-rated housing
- Simple Plug and Play installation
- No additional power supply required
- Multiple PoE repeaters can be deployed by daisy chain to extend range



Gigabit PoE Repeater
POR-1220

- Forwards 802.3af/802.3at/High-Power PoE to remote device
- High Power Midspan PoE compliant to simplify deployment and installation
- Built-in 2 output ports for 1 PoE and 1 non-PoE devices
- 10/100/1000Mbps wire speed transmission and reception
- Weatherproof IP65-rated housing
- Multiple PoE repeaters can be deployed by daisy chain to extend range
- Simple Plug and Play installation, no additional power supply required



Gigabit PoE Repeater
POR-1222

- Forwards 802.3af/High-Power PoE to remote device
- High Power Midspan PoE compliant to simplify deployment and installation
- Built-in 2 PoE ports for PoE devices
- 10/100/1000Mbps wire speed transmission and reception
- Weatherproof IP65-rated housing
- Multiple PoE repeaters can be deployed by daisy chain to extend range
- Simple Plug and Play installation, no additional power supply required



PoE over Hybrid Cable Receiver, 4 PoE Outputs, Indoor/Outdoor

PFE-1014R



PoE over Hybrid Cable Transmitter, 120W

PFE-1101T



PoE over 2-wire Transmitter

POT-0100

- Extend data and power up to 2km via a single Hybrid Fiber Cable
- Enable PoE devices to distant remote location
- Supporting high power consumption devices (up to 60W at 450m link)
- Flexible installation option - 1 or 4 PoE output receivers selectable



PoE over 2-wire Receiver

POT-1110



PoE over 2-wire Receiver

POT-0110

- Two-wire cables are used to connect 100Mbps Fast Ethernet PoE devices
- Maximum distance up to 400 meters for 24 AWG cable
- Maximum data rate up to 60 Mbps full duplex
- Remote PoE capability for PD devices of WiFi AP, IP camera, IP telephones
- Up to 15 Watts for remote PoE, Depending on PSE power
- Easy installation by indoor & outdoor different models
- Dip Switches for 2-wire line rate settings
- Auto MDIX for 10/100 Base T Ethernet LAN Ports
- Low-Latency for Video/Voice/Data applications
- IP65 Weatherproof (POT-1110)



**Fast Ethernet Fiber
PCIe Network Card**
FNC-0115

- 1 x SC Multi-Mode Fiber
- Supports most network operating systems (NOS)
- Built-in Wake-on-LAN feature to startup/shutdown computers remotely
- High-speed gigabit network card with PCI Express v1.1 compliant
- 802.1Q tag-based VLAN allows network segmentation to enhance performance and security



**Gigabit Fiber PCI
Network Card**
GNC-0100

- 1 x SFP
- Built-in Wake-on-LAN feature to startup/shutdown computers remotely
- Supports 32 bit PCI 1.0 and PCI 2.2 bus
- Supports remote management (WfM, RIS, SNMP/DMI)
- Supports most network operating systems (NOS)
- Interrupt Moderation: Delivers increased performance while significantly reducing CPU utilization



**Gigabit PCI Network
Card**
GNC-0105T

- 10/100/1000Mbps wire speed transmission and reception
- IEEE 802.3x Flow Control protects against lost packets for reliable data transmission
- Built-in Wake-on-LAN feature to startup computers remotely
- Supports most network operating systems (NOS)
- Supports 32 bit PCI 1.0 and PCI 2.2 bus



Gigabit Fiber PCIe Network Card
GNC-0110

- Reliable and proven Gigabit Ethernet technology from Intel Corporation
- Built-in Wake-on-LAN feature to startup computers remotely
- Interrupt Moderation: Delivers increased performance while significantly reducing CPU utilization
- 9K jumbo frames to increase data transfer rates
- IEEE 1588 and 802.1as (Time Sync)
- 802.1Q tag-based VLAN allows network segmentation to enhance performance and security
- Supports most network operating systems (NOS)



Gigabit PCIe Network Card
GNC-0112

- Low Profile Bracket included
- Built-in Wake-on-LAN feature to startup/shutdown computers remotely
- High-speed gigabit network card with PCI Express v1.1 compliant
- Supports single-lane PCI Express for link transmission speed at up to 2.5Gbps
- Supports IEEE 802.1P Layer 2 Priority Queuing for improving traffic flow
- 802.1Q tag-based VLAN allows network segmentation to enhance performance and security
- IEEE 802.3x Flow Control protects against lost packets for reliable data transmission



2.5-Gigabit PCIe Network Card
GNC-0113

- 10/100/1000/2500Mbps wire speed transmission and reception
- Complies with the PCIe Base Specification 3.1 (5GT/s)
- 9.5K jumbo frames to increase data transfer rates
- Built-in Wake-on-LAN feature to startup computers remotely
- Interrupt Moderation: Delivers increased performance while significantly reducing CPU utilization
- IEEE 1588 and 802.1as (Time Sync)
- Supports IEEE 802.1P Layer 2 Priority Queuing for improving traffic flow
- Supports IPv4/IPv6 network operation



Gigabit Fiber PCIe Network Card
GNC-0120

- PCIe 4X, 1 x SFP
- Built-in Wake-on-LAN feature to startup/shutdown computers remotely
- Supports iSCSI remote boot
- Load balancing across multiple CPUs
- Compatible with x4, x8, and x16 standard and low-profile PCI Express slots
- Supports most network operating systems (NOS)
- Intel® PROSet Utility for Windows* Device Manager



Gigabit Fiber PCIe Network Card
GNC-0122

- PCIe 4X, 2 x SFP
- Built-in Wake-on-LAN feature to startup/shutdown computers remotely
- Supports iSCSI remote boot
- Load balancing across multiple CPUs
- Compatible with x4, x8, and x16 standard and low-profile PCI Express slots
- Supports most network operating systems (NOS)
- Intel® PROSet Utility for Windows* Device Manager



Gigabit Fiber PCIe Network Card
GNC-0124

- PCIe 4X, 4 x SFP
- Built-in Wake-on-LAN feature to startup/shutdown computers remotely
- High-performing bridgeless design supporting PCI Express* Gen 2.1 5GT/s
- Innovative power management features including Energy Efficient Ethernet (EEE) and DMA Coalescing for increased efficiency and reduced power consumption
- Flexible I/O virtualization for port partitioning and quality of service (QoS) for up to 32 virtual ports
- Reliable and proven Gigabit Ethernet technology from Intel Corporation



Gigabit Fiber PCIe Network Card

GNC-0200

- 1 x SC Multi-Mode Fiber, Low Profile Bracket included
- Host Interface standard support PCI Express 2.0a
- High performance, reliability, and low power use in Intel 82575EB dual integrated MAC + PHY / SERDES chip controller
- Independently Fiber Gigabit Ethernet channel/s support Gigabit Ethernet 1000Base-SX
- Ultra deep packet buffer per channel lowers CPU utilization
- Hardware acceleration that can offload tasks from the host processor. The controllers can offload TCP/UDP/IP checksum Calculations and TCP segmentation



10 Gigabit Fiber PCIe Network Card

GNC-0201

- PCIe 8X, 1 x SFP
- Built-in Wake-on-LAN feature to startup/shutdown computers remotely
- Load balancing across multiple CPUs
- Supports iSCSI remote boot
- Supports Fibre Channel over Ethernet (FCoE)
- Supports most network operating systems (NOS)



10 Gigabit Fiber PCIe Network Card

GNC-0202

- PCIe 8X, 2 x SFP
- Built-in Wake-on-LAN feature to startup/shutdown computers remotely
- Supports Dual SFP+ Connectivity
- Load balancing across multiple CPUs
- Supports iSCSI remote boot
- Supports Fibre Channel over Ethernet (FCoE)
- Supports most network operating systems (NOS)
- Intel® PROSet Utility for Windows* Device Manager
- IEEE 1588 and 802.1as (Time Sync)



10-Gigabit PCIe x4 Network Card

GNC-0210

- 10/100/1000/2500/5000/10000Mbps wire speed transmission and reception
- Supports line rates of 8.0 GT/s and 5.0 GT/s per lane for smooth, efficient data flow. Choose between Gen3 x4 or Gen2 x4 compatibility for optimal performance on your system.
- 16K jumbo frames to increase data transfer rates
- Built-in Wake-on-LAN feature to startup computers remotely
- Interrupt Moderation: Delivers increased performance while significantly reducing CPU utilization
- IEEE 1588 and 802.1as (Time Sync)
- Supports IEEE 802.1P Layer 2 Priority Queuing for improving traffic flow
- Supports IPv4/IPv6 network operation



Fast Ethernet USB Network Adapter

USB-0301

- 10/100Mbps wire speed transmission and reception
- Simple Plug and Play installation, no additional power supply required
- Built-in Wake-on-LAN feature to startup computers remotely
- Supports IPv4/IPv6 network operation
- Multi-platform support: Windows, Mac OS



Gigabit USB Network Adapter

USB-0401

- 10/100/1000Mbps wire speed transmission and reception
- Minimize carbon footprint with advanced energy efficient technology (IEEE 802.3az)
- 4K jumbo frames to increase data transfer rates
- Built-in Wake-on-LAN feature to startup computers remotely and modern snadby
- Supports IPv4/IPv6 network operation
- No additional power supply required
- Multi-platform support: Windows, Mac OS, Linux



Gigabit USB-C Network Adapter
USB-0402

- 10/100/1000Mbps wire speed transmission and reception
- Built-in Wake-on-LAN feature to startup computers remotely
- Minimize carbon footprint with advanced energy efficient technology (IEEE 802.3az)
- 4K jumbo frames to increase data transfer rates
- Supports IPv4/IPv6 network operation
- No additional power supply required
- Multi-platform support: Windows, Mac OS, Linux



2.5 Gigabit Ethernet 2-in-1 USB-C/A Network Adapter
USB-0423

- 10/100/1000/2500 Mbps wire speed transmission and reception
- 16K jumbo frames to increase data transfer rates
- Built-in Wake-on-LAN feature to startup computers remotely and modern snadby.
- Minimize carbon footprint with advanced energy efficient technology (IEEE 802.3az)
- Supports IPv4/IPv6 network operation
- Simple Plug and Play installation
- Multi-platform support: Windows, Linux, MacOS, iPadOS and Android



Gigabit USB-C Network Adapter with USB Hub
USB-0504

- 10/100/1000Mbps wire speed transmission and reception
- Built-in 3-Port Super Speed USB 3.0 hub
- USB 3.0 super speed (5Gb/s)
- Built-in Wake-on-LAN feature to startup computers remotely
- Multi-platform support: Windows, Mac OS



Gigabit USB Network Adapter with USB Hub
USB-0503

- 10/100/1000Mbps wire speed transmission and reception
- Built-in 3-Port Super Speed USB 3.0 hub
- USB 3.0 super speed (5Gb/s)
- Built-in Wake-on-LAN feature to startup computers remotely
- Multi-platform support: Windows, Mac OS



AC1200 Dual Band Wireless USB Network Adapter
WUA-1810A (1-11 CHANNELS)
WUA-1810E (1-13 CHANNELS)

- MU-MIMO technology greatly enhances WLAN performance for all clients
- Compatible with IEEE 802.11a/b/g/n/ac Wave 2 wireless standards
- Provides wireless speeds of up to 300Mbps (2.4GHz) / 867Mbps (5GHz)
- Dual band technology reduces interference, providing reliable connections
- Provides 5dBi detachable antenna
- Comes with a USB cradle to allow flexible placement for optimal wireless signal



**RJ45 to SFP Managed
Fast Ethernet Media
Converter**
FVM-1000

- Built-in LFP (Link Fault Pass-through) (LLCF/LLR) Technology
- Web-based and SNMP Management
- IEEE 802.3x Flow Control protects against lost packets for reliable data transmission
- Supports VLAN (tag-based, Q-in-Q)
- Transfers data from 10/100Base-TX copper to fiber interfaces



**RJ45 to SC Managed
Fast Ethernet
Media Converter**
FVM-1101

- Multi-mode fiber with SC connector for transmission of up to 2km
- Built-in LFP (Link Fault Pass-through) (LLCF/LLR) Technology
- Web-based and SNMP Management
- IEEE 802.3x Flow Control protects against lost packets for reliable data transmission
- Supports VLAN (tag-based, Q-in-Q)



**RJ45 to SC Managed
Fast Ethernet Media
Converter**
FVM-1220

- Single-mode fiber with SC connector for transmission of up to 20km
- Web-based and SNMP Management
- Built-in LFP (Link Fault Pass-through) (LLCF/LLR) Technology
- IEEE 802.3x Flow Control protects against lost packets for reliable data transmission
- Supports VLAN (tag-based, Q-in-Q)



**RJ45 to SC Fast
Ethernet Media
Converter**
FVT-1101

- Supports the transmission of extra-long packets up to 1.6KB
- IEEE 802.3x Flow Control protects against lost packets for reliable data transmission
- Multi-mode fiber with SC connector for transmission of up to 2km
- Supports low-time lag transmission



RJ45 to SC Fast Ethernet Media Converter

FVT-1102

- Supports the transmission of extra-long packets up to 1.6KB
- IEEE 802.3x Flow Control protects against lost packets for reliable data transmission
- Single-mode fiber with SC connector for transmission of up to 20km
- Supports low-time lag transmission



RJ45 to SC Fast Ethernet Media Converter

FVT-1103

- Supports the transmission of extra-long packets up to 1.6KB
- IEEE 802.3x Flow Control protects against lost packets for reliable data transmission
- Single-mode fiber with SC connector for transmission of up to 40km
- Supports low-time lag transmission



RJ45 to SC Fast Ethernet Media Converter

FVT-1104

- Supports the transmission of extra-long packets up to 1.6KB
- IEEE 802.3x Flow Control protects against lost packets for reliable data transmission
- Single-mode fiber with SC connector for transmission of up to 60km
- Supports low-time lag transmission



RJ45 to SC Fast Ethernet Media Converter

FVT-1105

- Supports the transmission of extra-long packets up to 1.6KB
- IEEE 802.3x Flow Control protects against lost packets for reliable data transmission
- Single-mode fiber with SC connector for transmission of up to 80km
- Supports low-time lag transmission



RJ45 to SC Fast Ethernet Media Converter

FVT-1106

- Supports the transmission of extra-long packets up to 1.6KB
- IEEE 802.3x Flow Control protects against lost packets for reliable data transmission
- Single-mode fiber with SC connector for transmission of up to 120km
- Supports low-time lag transmission



RJ45 to SC Fast Ethernet Media Converter

FVT-2001

- Transfers data from 10/100Base-TX copper to fiber interfaces
- Multi-mode fiber with SC connector for transmission of up to 2km
- Built-in LFP (Link Fault Pass-through) (LLCF/LLR) Technology
- IEEE 802.3x Flow Control protects against lost packets for reliable data transmission
- Dip switches for customized configuration
- Supports low-time lag transmission
- Supports the transmission of extra-long packets up to 1.6KB
- -10°C to 55°C operating temperature range



RJ45 to ST Fast Ethernet Media Converter

FVT-2002

- Transfers data from 10/100Base-TX copper to fiber interfaces
- Multi-mode fiber with ST connector for transmission of up to 2km
- Built-in LFP (Link Fault Pass-through) (LLCF/LLR) Technology
- IEEE 802.3x Flow Control protects against lost packets for reliable data transmission
- Dip switches for customized configuration
- Supports low-time lag transmission
- Supports the transmission of extra-long packets up to 1.6KB
- -10°C to 55°C operating temperature range



RJ45 to SC Fast Ethernet Media Converter

FVT-2201

- Transfers data from 10/100Base-TX copper to fiber interfaces
- Single-mode fiber with SC connector for transmission of up to 20km
- Built-in LFP (Link Fault Pass-through) (LLCF/LLR) Technology
- IEEE 802.3x Flow Control protects against lost packets for reliable data transmission
- Dip switches for customized configuration
- Supports low-time lag transmission
- Supports the transmission of extra-long packets up to 1.6KB
- -10°C to 55°C operating temperature range



RJ45 to SC BIDI Fast Ethernet Media Converter Set

FVT-2202

- Transfers data from 10/100Base-TX copper to fiber interfaces
- Built-in LFP (Link Fault Pass-through) (LLCF/LLR) Technology
- Dip switches for customized configuration
- Supports low-time lag transmission
- Supports the transmission of extra-long packets up to 1.6KB
- -10°C to 55°C operating temperature range
- Single-mode fiber with BIDI SC connector for transmission of up to 20km



RJ45 to SC Fast Ethernet Media Converter

FVT-2401

- Transfers data from 10/100Base-TX copper to fiber interfaces
- Single-mode fiber with SC connector for transmission of up to 40km
- Built-in LFP (Link Fault Pass-through) (LLCF/LLR) Technology
- IEEE 802.3x Flow Control protects against lost packets for reliable data transmission
- Dip switches for customized configuration
- Supports low-time lag transmission
- Supports the transmission of extra-long packets up to 1.6KB
- -10°C to 55°C operating temperature range



RJ45 to SFP Managed Gigabit Media Converter

GVM-1000

- IEEE 802.3x Flow Control protects against lost packets for reliable data transmission
- Web-based and SNMP Management
- Built-in LFP (Link Fault Pass-through) (LLCF/LLR) Technology
- Supports VLAN (tag-based, Q-in-Q)
- Support Operations, Administration, and Maintenance (OAM) mechanisms
- Transfers data from 10/100/1000Base-T copper to fiber interfaces



RJ45 to SC Managed Gigabit Media Converter

GVM-1101

- Multi-mode fiber with SC connector for transmission of up to 500m
- IEEE 802.3x Flow Control protects against lost packets for reliable data transmission
- Web-based and SNMP Management
- Built-in LFP (Link Fault Pass-through) (LLCF/LLR) Technology
- Supports VLAN (tag-based, Q-in-Q)
- Support Operations, Administration, and Maintenance (OAM) mechanisms



**RJ45 to SC Managed
Gigabit Media
Converter**
GVM-1220

- Single-mode fiber with SC connector for transmission of up to 20km
- Web-based and SNMP Management
- Built-in LFP (Link Fault Pass-through) (LLCF/LLR) Technology
- Supports VLAN (tag-based, Q-in-Q)
- Support Operations, Administration, and Maintenance (OAM) mechanisms



**Ultra-Slim RJ45 to
SFP Gigabit Media
Converter**
GVT-1001

- 10/100/1000Base-T to 1000Base-X
- SFP slot for flexible long distance transmission
- USB powered for easy portability or used with the included power adaptor
- Plug-and-Play and auto-MDI/MDIX
- Lower jitter and Lower latency
- Ultra low power dissipation < 1.2W
- Support Jumbo frame 10Kbytes
- Support watchdog, automatically reboot if frozen



**RJ45 to SFP Gigabit
Media Converter**
GVT-2000

- Transfers data from 10/100/1000Base-T copper to fiber interfaces
- 9K jumbo frames to increase data transfer rates
- Built-in LFP (Link Fault Pass-through) (LLCF/LLR) Technology
- IEEE 802.3x Flow Control protects against lost packets for reliable data transmission
- Dip switches for customized configuration
- Supports low-time lag transmission
- Supports the transmission of extra-long packets up to 1.6KB
- -10°C to 55°C operating temperature range



**RJ45 to SC Gigabit
Media Converter**
GVT-2001

- Transfers data from 10/100/1000Base-T copper to fiber interfaces
- 1000Base-SX Multi-mode fiber for the link up to 550m
- 9K jumbo frames to increase data transfer rates
- Built-in LFP (Link Fault Pass-through) (LLCF/LLR) Technology
- Dip switches for customized configuration
- Supports low-time lag transmission
- Supports the transmission of extra-long packets up to 1.6KB
- -10°C to 55°C operating temperature range



**RJ45 to SC Gigabit
Media Converter**
GVT-2002

- Transfers data from 10/100/1000Base-T copper to fiber interfaces
- 9K jumbo frames to increase data transfer rates
- Built-in LFP (Link Fault Pass-through) (LLCF/LLR) Technology
- Single-mode fiber with SC connector for transmission of up to 20km
- Dip switches for customized configuration
- Supports low-time lag transmission
- Supports the transmission of extra-long packets up to 1.6KB
- -10°C to 55°C operating temperature range



**RJ45 to ST Gigabit
Ethernet Media
Converter**
GVT-2003

- Single-mode fiber with ST connector for transmission of up to 20km
- Transfers data from 10/100/1000Base-T copper to fiber interfaces
- 9K jumbo frames to increase data transfer rates
- Built-in LFP (Link Fault Pass-through) (LLCF/LLR) Technology
- IEEE 802.3x Flow Control protects against lost packets for reliable data transmission
- Dip switches for customized configuration
- Supports low-time lag transmission
- -10°C to 55°C operating temperature range



RJ45 to SFP Gigabit Media Converter

GVT-2010

- Transfers data from 10/100/1000Base-T copper to fiber interfaces
- IEEE 802.3af PoE PD that can be powered by PoE PSE or external power supply
- 9K jumbo frames to increase data transfer rates
- Built-in LFP (Link Fault Pass-through) (LLCF/LLR) Technology
- Supports low-time lag transmission
- Supports the transmission of extra-long packets up to 1.6KB
- -10°C to 55°C operating temperature range



RJ45 to SFP Gigabit Media Converter Switch

GVT-2011

- 1 Gigabit Ethernet port and 2 Gigabit SFP slots
- Transfers data from 10/100/1000Base-T copper to fiber interfaces
- IEEE 802.3x Flow Control protects against lost packets for reliable data transmission
- Supports low-time lag transmission
- -10°C to 55°C operating temperature range



RJ45 to SFP Gigabit Media Converter, PoE PSE

GVT-2012

- Transfers data from 10/100/1000Base-T copper to fiber interfaces
- IEEE 802.3af/at PoE PSE with 30W power budget
- 9K jumbo frames to increase data transfer rates
- 1000Mbps full-duplex, 10/100Mbps full/half-duplex, auto-negotiation, auto-MDI/MDIX
- IEEE 802.3x Flow Control protects against lost packets for reliable data transmission
- IEEE 802.3z Gigabit Ethernet compliant



RJ45 to SC Gigabit Media Converter, PoE PSE, 500M

GVT-2013

- Transfers data from 10/100/1000Base-T copper to fiber interfaces
- Multi-mode fiber with SC connector for transmission of up to 0.5km
- IEEE 802.3af/at PoE PSE with 30W power budget
- 9K jumbo frames to increase data transfer rates
- 1000Mbps full-duplex, 10/100Mbps full/half-duplex, auto-negotiation, auto-MDI/MDIX
- IEEE 802.3x Flow Control protects against lost packets for reliable data transmission
- IEEE 802.3z Gigabit Ethernet compliant



RJ45 to SC Gigabit Media Converter, PoE PSE, 20KM

GVT-2014

- Transfers data from 10/100/1000Base-T copper to fiber interfaces
- Single-Mode fiber with SC connector for transmission of up to 20km
- IEEE 802.3af/at PoE PSE with 30W power budget
- 9K jumbo frames to increase data transfer rates
- 1000Mbps full-duplex, 10/100Mbps full/half-duplex, auto-negotiation, auto-MDI/MDIX
- IEEE 802.3x Flow Control protects against lost packets for reliable data transmission
- IEEE 802.3z Gigabit Ethernet compliant



RJ45 to SFP Gigabit Media Converter, 802.3bt 60W PoE PSE

GVT-2015

- **Ultra-Fast Wired Connectivity:** Supports Gigabit speeds (up to 1000 Mbps) for seamless data transfer and lag-free network performance.
 - **Flexible Power Delivery:** Provides PoE++ (IEEE 802.3af/at/bt) on the copper port, eliminating the need for separate power adapters for compatible devices.
 - **Effortless Network Setup:** Auto-negotiation and auto-MDI/MDI-X ensure a smooth connection regardless of cable type.
 - **Versatile Fiber Optic Options:** Supports both Multi-mode and Single-mode fiber using LC connectors for extended network reach.
 - **Enhanced Data Throughput:** Accommodates jumbo frames (up to 9K bytes) for faster transmission of large files.
- Wide Operating Temperature Range: Functions reliably in environments ranging from 0°C to 55°C.



RJ45 to SFP Gigabit Media Converter, 802.3bt 90W PoE PSE

GVT-2016

- **Ultra-Fast Wired Connectivity:** Supports Gigabit speeds (up to 1000 Mbps) for seamless data transfer and lag-free network performance.
- **Flexible Power Delivery:** Provides PoE++ (IEEE 802.3af/at/bt) on the copper port, eliminating the need for separate power adapters for compatible devices.
- **Effortless Network Setup:** Auto-negotiation and auto-MDI/MDI-X ensure a smooth connection regardless of cable type.
- **Versatile Fiber Optic Options:** Supports both Multi-mode and Single-mode fiber using LC connectors for extended network reach.
- **Enhanced Data Throughput:** Accommodates jumbo frames (up to 9K bytes) for faster transmission of large files.
- **Wide Operating Temperature Range:** Functions reliably in environments ranging from 0°C to 55°C.



GVT-2051, RJ45 to SFP+ 10-Gigabit Media Converter

GVT-2051

- Supports both 1000M/2.5G/5G/10G copper and SFP+ port (10G/5G/2.5G/1000M) for flexible network integration.
 - Network ports feature auto-negotiation and MDI/MDI-X support for hassle-free connections.
 - Built-in panel indicators provide clear visual status and aid in troubleshooting.
 - Copper port speed determines the fiber port speed, ensuring consistent performance.
- Simple Plug and Play installation minimizes configuration time. Built-in safeguards protect against electrostatic discharge (ESD) damage.
- Fits seamlessly into CVH-2000 converter chassis, enhancing versatility and modularity in network setups."llation



RJ45 to SFP+ 10-Gigabit Media Converter

GVT-0500

- Converts 10G fiber to 10G Base-T Ethernet
- Usable with all LevelOne SFP+ modules
- 9K jumbo frames to increase data transfer rates
- Supports low-time lag transmission
- Supports ITU-T DWDM/CWDM wavelengths
- Hot-swappable
- Quick and easy installation



Ethernet over VDSL2 Converter(Annex A)

VDS-1201

- Trellis coding support up to 1024 discrete multi-tone bins and 4 Dip Switches for configuration settings
- Low-Latency for Video/Voice/Data applications
- Supports a VDSL connection of up to 2km over single pair copper wire
- Features selectable Fast and Interleaved modes
- Selectable fixed data rate and fixed SNR margin



Ethernet over VDSL2 Converter (BNC Connection)

VDS-1203

- Trellis coding support up to 1024 discrete multi-tone bins and 4 Dip Switches for configuration settings
- Low-Latency for Video/Voice/Data applications
- Features selectable Fast and Interleaved modes
- Selectable fixed data rate and fixed SNR margin
- Supports a VDSL connection of up to 2km over single coaxial cable



14-Slot Media Converter Chassis
CVH-2000

- Supports 14 slots for various type of Media Converters
- Supports power redundancy with dual AC power inputs
- Converter module hot-swappable
- -10°C to 55°C operating temperature range
- Compatible with FVT-11xx/FVT-2xxx/GVT-2xxx converters



Ethernet over VDSL2 Converter(Annex B)
VDS-1202

- Trellis coding support up to 1024 discrete multi-tone bins and 4 Dip Switches for configuration settings
- Low-Latency for Video/Voice/Data applications
- Supports a VDSL connection of up to 2km over single pair copper wire
- Features selectable Fast and Interleaved modes
- Selectable fixed data rate and fixed SNR margin



Gigabit Ethernet over VDSL2 converter/Extender
VDS-2201

- Supports a VDSL connection up to 2km over single pair copper wire
- Provides 150Mbps downstream and 60Mbps
- Selectable fixed data rate and fixed SNR margin
- Features selectable Fast and Interleaved modes
- Low-Latency for Video/Voice/Data applications



Parallel Print Server
FPS-1031

- Parallel print server for network print sharing
- Simple setup with user-friendly interface
- Support multiple network printing protocols
- Support multiple operating systems



USB Print Server
FPS-1032

- USB print server for network print sharing
- USB 2.0 interface
- Simple setup with user-friendly interface
- Support multiple network printing protocols
- Support multiple operating systems



Parallel/USB Print Server
FPS-1033

- Multi-Port print server for network print sharing
- USB 2.0 interface
- Simple setup with user-friendly interface
- Support multiple network printing protocols
- Support multiple operating systems



10Gbps SFP+ Direct Attach Copper Cable, Twinax

DAC-0101 (1M)
DAC-0102 (2M)
DAC-0103 (3M)
DAC-0105 (5M)

- Support for multi-gigabit data rates up to 10.5Gbps
- Data rates backward compatible to 1Gbps
- Hot-pluggable SFP 20PIN footprint
- I/O Connector designed for high speed differential signal applications
- Improved Pluggable Form Factor (IPF) compliant for enhanced EMI/EMC performance
- Compatible to SFP+ MSA
- Temperature Range: 0~ 70 °C
- RoHS Compatible



1.25Gbps Multi-mode SFP Transceiver, 550m

GVT-0300

- 850nm
- 1000Base-SX Multi-mode fiber for the link up to 550m
- Supports Digital Diagnostics Monitoring (DDM) for easy status monitoring
- Provides duplex LC connector
- Hot-swappable providing non-stop service
- Compatible with SFP Multi-Sourcing Agreement (MSA) standards



1.25Gbps Single-mode SFP Transceiver, 10km

GVT-0301

- 1310nm
- Supports Digital Diagnostics Monitoring (DDM) for easy status monitoring
- Provides duplex LC connector
- Hot-swappable providing non-stop service
- Compatible with SFP Multi-Sourcing Agreement (MSA) standards



1.25Gbps Single-mode SFP Transceiver, 80km

GVT-0302

- 1550nm
- Supports Digital Diagnostics Monitoring (DDM) for easy status monitoring
- Provides duplex LC connector
- Hot-swappable providing non-stop service
- Compatible with SFP Multi-Sourcing Agreement (MSA) standards



155Mbps Multi-mode 155Mbps Single- SFP transceiver, 2km

SFP-1101

- 850nm FP Laser Diode
- 100Base-FX Multi-mode fiber for the link up to 2km
- Provides duplex LC connector
- Compatible with SFP Multi-Sourcing Agreement (MSA) standards
- Hot-swappable providing non-stop service
- RoHS compliant and Lead Free
- Supports Digital Diagnostics Monitoring Interface (DDMI) for easy status monitoring



155Mbps Single- mode SFP Transceiver, 20km

SFP-1311

- 1310nm FP Laser Diode
- 100Base-FX Single-mode fiber for the link up to 20km
- Provides duplex LC connector
- Compatible with SFP Multi-Sourcing Agreement (MSA) standards
- Hot-swappable providing non-stop service
- RoHS compliant and Lead Free
- Supports Digital Diagnostics Monitoring Interface (DDMI) for easy status monitoring



155Mbps Single- mode SFP Transceiver, 40km

SFP-1411

- 1310nm
- 100Base-FX Single-mode fiber for the link up to 40km
- Provides duplex LC connector
- Compatible with SFP Multi-Sourcing Agreement (MSA) standards
- Hot-swappable providing non-stop service
- RoHS compliant and Lead Free
- Supports Digital Diagnostics Monitoring Interface (DDMI) for easy status monitoring



1.25Gbps Multi-mode SFP Transceiver, 550m

SFP-3001

- 850nm FP Laser Diode
- Supports Digital Diagnostics Monitoring Interface (DDMI) for easy status monitoring
- Provides duplex LC connector
- 3.3V Single power supply
- IEEE 802.3z Gigabit Ethernet compliant
- Hot-swappable
- RoHS compliant and Lead Free
- Operating temperature: 0°C to 70°C



1.25Gbps Multi-mode SFP Transceiver, 2km

SFP-3111

- 1310nm FP Laser Diode
- 1.25Gbps Bi-directional single fiber link
- Provides duplex LC connector
- Compatible with SFP Multi-Sourcing Agreement (MSA) standards
- Hot-swappable providing non-stop service
- RoHS compliant and Lead Free
- Supports Digital Diagnostics Monitoring Interface (DDMI) for easy status monitoring



1.25Gbps Single- mode SFP Transceiver, 20km

SFP-3211

- 1310nm FP Laser Diode
- Compatible with SFP Multi-Sourcing Agreement (MSA) standards
- Supports Digital Diagnostics Monitoring Interface (DDMI) for easy status monitoring
- Hot-swappable providing non-stop service
- Provides duplex LC connector
- 3.3V Single power supply
- IEEE 802.3z Gigabit Ethernet compliant
- RoHS compliant and Lead Free
- Operating temperature: 0°C to 70°C



1.25Gbps Single-mode SFP Transceiver, 40km
SFP-3411

- 1310nm FP Laser Diode
- Supports Digital Diagnostics Monitoring Interface (DDMI) for easy status monitoring
- IEEE 802.3z Gigabit Ethernet compliant
- Compatible with SFP Multi-Sourcing Agreement (MSA) standards
- Hot-swappable providing non-stop service
- Provides duplex LC connector
- RoHS compliant and Lead Free



1.25Gbps Single-mode SFP Transceiver
SFP-3611 (80KM)
SFP-3711 (120KM)

- 1550nm DFB Laser Diode
- 1.25Gbps Bi-directional single fiber link
- IEEE 802.3z Gigabit Ethernet compliant
- Provides duplex LC connector
- Compatible with SFP Multi-Sourcing Agreement (MSA) standards
- Hot-swappable providing non-stop service
- RoHS compliant and Lead Free
- Supports Digital Diagnostics Monitoring Interface (DDMI) for easy status monitoring



1.25Gbps Copper SFP Transceiver, 100m, RJ45
SFP-3841

- Transfers data from 10/100/1000Base-T copper to fiber interfaces
- Supports Digital Diagnostics Monitoring Interface (DDMI) for easy status monitoring
- Operating temperature: 0°C to 70°C
- RoHS compliant and Lead Free
- Hot-swappable



10Gbps Copper SFP+ Transceiver, 30m, RJ45
SFP-6601

- Transfers data from 10GBase-T copper to fiber interfaces
- Hot-swappable providing non-stop service
- RoHS compliant and Lead Free



10Gbps Multi-mode SFP+ Transceiver, 300m, 850nm
SFP-6101

- High-quality 10Gbase short range SFP-Plus transceiver
- Provides duplex LC connector
- Compatible with SFP Multi-Sourcing Agreement (MSA) standards
- Hot-swappable providing non-stop service
- RoHS compliant and Lead Free
- Supports Digital Diagnostics Monitoring Interface (DDMI) for easy status monitoring



10Gbps Single-mode SFP+ Transceiver, 10km, 1310nm
SFP-6121

- Provides duplex LC connector
- Compatible with SFP Multi-Sourcing Agreement (MSA) standards
- Hot-swappable providing non-stop service
- RoHS compliant and Lead Free
- Supports Digital Diagnostics Monitoring Interface (DDMI) for easy status monitoring



10Gbps Single-mode SFP+ Transceiver, 40km, 1550nm

SFP-6141

- High-quality 10Gbase Long range SFP-Plus transceiver
- Compatible with SFP Multi-Sourcing Agreement (MSA) standards
- Provides duplex LC connector
- Hot-swappable providing non-stop service
- RoHS compliant and Lead Free
- Supports Digital Diagnostics Monitoring Interface (DDMI) for easy status monitoring



10Gbps Single-mode SFP+ Transceiver, 80km, 1550nm

SFP-6181

- 1550nm FP Laser Diode
- High-quality 10Gbase Long range SFP-Plus transceiver
- compatible with SFP Multi-Sourcing Agreement (MSA) standards
- Provides duplex Lc connector
- Hot-swappable providing non-stop service
- RoHS compliant and Lead Free
- Supports digital diagnostics Monitoring Interface (DDMI) for easy status monitoring



155Mbps Single-mode BIDI SFP Transceiver, 20km

SFP-7321

- TX 1310nm / RX 1550nm
- 100Base-FX Single-mode fiber for the link up to 20km
- Provides duplex LC connector
- Compatible with SFP Multi-Sourcing Agreement (MSA) standards
- Hot-swappable providing non-stop service
- RoHS compliant and Lead Free
- Supports Digital Diagnostics Monitoring Interface (DDMI) for easy status monitoring



155Mbps Single-mode BIDI SFP Transceiver, 20km

SFP-7331

- TX 1550nm / RX 1310nm
- 100Base-FX Single-mode fiber for the link up to 20km
- Provides duplex LC connector
- Compatible with SFP Multi-Sourcing Agreement (MSA) standards
- Hot-swappable providing non-stop service
- RoHS compliant and Lead Free
- Supports Digital Diagnostics Monitoring Interface (DDMI) for easy status monitoring



155Mbps Single-mode BIDI SFP Transceiver, 40km

SFP-7421

- TX 1310nm / RX 1550nm
- 100Base-FX Single-mode fiber for the link up to 40km
- Provides duplex LC connector
- Compatible with SFP Multi-Sourcing Agreement (MSA) standards
- Hot-swappable providing non-stop service
- RoHS compliant and Lead Free
- Supports Digital Diagnostics Monitoring Interface (DDMI) for easy status monitoring



155Mbps Single-mode BIDI SFP Transceiver, 40km

SFP-7431

- TX 1550nm / RX 1310nm
- 100Base-FX Single-mode fiber for the link up to 40km
- Provides duplex LC connector
- Compatible with SFP Multi-Sourcing Agreement (MSA) standards
- Hot-swappable providing non-stop service
- RoHS compliant and Lead Free
- Supports Digital Diagnostics Monitoring Interface (DDMI) for easy status monitoring



1.25Gbps Single-mode BIDI SFP Transceiver, 10km
SFP-9221

- TX 1310nm / RX 1550nm
- 1.25Gbps Bi-directional single fiber link
- IEEE 802.3z Gigabit Ethernet compliant
- Provides duplex LC connector
- Compatible with SFP Multi-Sourcing Agreement (MSA) standards
- Hot-swappable providing non-stop service
- RoHS compliant and Lead Free
- Supports Digital Diagnostics Monitoring Interface (DDMI) for easy status monitoring



1.25Gbps Single-mode BIDI SFP Transceiver, 10km
SFP-9231

- TX 1550nm / RX 1310nm
- 1.25Gbps Bi-directional single fiber link
- IEEE 802.3z Gigabit Ethernet compliant
- Provides duplex LC connector
- Compatible with SFP Multi-Sourcing Agreement (MSA) standards
- Hot-swappable providing non-stop service
- RoHS compliant and Lead Free
- Supports Digital Diagnostics Monitoring Interface (DDMI) for easy status monitoring



1.25Gbps Single-mode BIDI SFP Transceiver, 20km
SFP-9321

- TX 1310nm / RX 1550nm
- 1.25Gbps Bi-directional single fiber link
- IEEE 802.3z Gigabit Ethernet compliant
- Provides duplex LC connector
- Compatible with SFP Multi-Sourcing Agreement (MSA) standards
- Hot-swappable providing non-stop service
- RoHS compliant and Lead Free
- Supports Digital Diagnostics Monitoring Interface (DDMI) for easy status monitoring



1.25Gbps Single-mode BIDI SFP Transceiver, 20km
SFP-9331

- TX 1550nm / RX 1310nm
- 1.25Gbps Bi-directional single fiber link
- IEEE 802.3z Gigabit Ethernet compliant
- Provides duplex LC connector
- Compatible with SFP Multi-Sourcing Agreement (MSA) standards
- Hot-swappable providing non-stop service
- RoHS compliant and Lead Free
- Supports Digital Diagnostics Monitoring Interface (DDMI) for easy status monitoring



1.25Gbps Single-mode BIDI SFP Transceiver, 40km
SFP-9421

- TX 1310nm / RX 1550nm
- 1.25Gbps Bi-directional single fiber link
- IEEE 802.3z Gigabit Ethernet compliant
- Provides duplex LC connector
- Compatible with SFP Multi-Sourcing Agreement (MSA) standards
- Hot-swappable providing non-stop service
- RoHS compliant and Lead Free
- Supports Digital Diagnostics Monitoring Interface (DDMI) for easy status monitoring



1.25Gbps Single-mode BIDI SFP Transceiver, 40km
SFP-9431

- TX 1550nm / RX 1310nm
- 1.25Gbps Bi-directional single fiber link
- IEEE 802.3z Gigabit Ethernet compliant
- Provides duplex LC connector
- Compatible with SFP Multi-Sourcing Agreement (MSA) standards
- Hot-swappable providing non-stop service
- RoHS compliant and Lead Free
- Supports Digital Diagnostics Monitoring Interface (DDMI) for easy status monitoring



10Gbps Single-mode BIDI SFP+ Transceiver, 10km
SFP-6421

- TX 1270nm / RX 1330nm
- 10Gbps Bi-directional single fiber link
- Compliant with IEEE 802.3ae 10GBase-LR, 10GBase-LW standards
- Supports Digital Diagnostics Monitoring (DDM) for easy status monitoring
- Hot-swappable providing non-stop service
- Compatible with SFP Multi-Sourcing Agreement (MSA) standards



10Gbps Single-mode BIDI SFP+ Transceiver, 20km
SFP-6431

- TX 1270nm / RX 1330nm
- 10Gbps Bi-directional single fiber link
- Compliant with IEEE 802.3ae 10GBase-LR, 10GBase-LW standards
- Supports Digital Diagnostics Monitoring (DDM) for easy status monitoring
- Hot-swappable providing non-stop service
- RoHS compliant and Lead Free
- Compatible with SFP Multi-Sourcing Agreement (MSA) standards



10Gbps Single-mode BIDI SFP+ Transceiver, 40km
SFP-6441

- TX 1270nm / RX 1330nm
- 10Gbps Bi-directional single fiber link
- Compliant with IEEE 802.3ae 10GBase-LR, 10GBase-LW standards
- Supports Digital Diagnostics Monitoring (DDM) for easy status monitoring
- Hot-swappable providing non-stop service
- RoHS compliant and Lead Free
- Compatible with SFP Multi-Sourcing Agreement (MSA) standards



10Gbps Single-mode BIDI SFP+ Transceiver, 60km
SFP-6451

- TX 1270nm / RX 1330nm
- 10Gbps Bi-directional single fiber link
- Compliant with IEEE 802.3ae 10GBase-LR, 10GBase-LW standards
- Supports Digital Diagnostics Monitoring (DDM) for easy status monitoring
- Hot-swappable providing non-stop service
- RoHS compliant and Lead Free
- Compatible with SFP Multi-Sourcing Agreement (MSA) standards



10Gbps Single-mode BIDI SFP+ Transceiver, 10km
SFP-6521

- TX 1330nm / RX 1270nm
- 10Gbps Bi-directional single fiber link
- Supports Digital Diagnostics Monitoring (DDM) for easy status monitoring
- Compliant with IEEE 802.3ae 10GBase-LR, 10GBase-LW standards
- Compatible with SFP Multi-Sourcing Agreement (MSA) standards
- Hot-swappable providing non-stop service
- RoHS compliant and Lead Free



10Gbps Single-mode BIDI SFP+ Transceiver, 20km
SFP-6531

- TX 1330nm / RX 1270nm
- 10Gbps Bi-directional single fiber link
- Supports Digital Diagnostics Monitoring (DDM) for easy status monitoring
- Compliant with IEEE 802.3ae 10GBase-LR, 10GBase-LW standards
- Compatible with SFP Multi-Sourcing Agreement (MSA) standards
- Hot-swappable providing non-stop service
- RoHS compliant and Lead Free



10Gbps Single-mode BIDI SFP+ Transceiver, 40km
SPF-6541

- TX 1330nm / RX 1270nm
- 10Gbps Bi-directional single fiber link
- Supports Digital Diagnostics Monitoring (DDM) for easy status monitoring
- Compliant with IEEE 802.3ae 10GBase-LR, 10GBase-LW standards
- Compatible with SFP Multi-Sourcing Agreement (MSA) standards
- Hot-swappable providing non-stop service
- RoHS compliant and Lead Free



10Gbps Single-mode BIDI SFP+ Transceiver, 60km
SPF-6551

- TX 1330nm / RX 1270nm
- 10Gbps Bi-directional single fiber link
- Supports Digital Diagnostics Monitoring (DDM) for easy status monitoring
- Compliant with IEEE 802.3ae 10GBase-LR, 10GBase-LW standards
- Compatible with SFP Multi-Sourcing Agreement (MSA) standards
- Hot-swappable providing non-stop service
- RoHS compliant and Lead Free



40Gbps QSFP+ Active Optical Cable
AOC-0301(1M)
AOC-0302(2M)
AOC-0303(3M)

- Data rates of up to 40Gbps
- Compliant with 40GBASE-SR4 standards
- Supports QDR/DDR 4x link bandwidth
- Compliant with QSFP+ Multi-Sourcing Agreement (MSA) standards
- Supports Digital Diagnostics Monitoring (DDM) for easy status monitoring
- Hot-swappable providing non-stop service



100Gbps QSFP28 Active Optical Cable
AOC-0501(1M)
AOC-0502(2M)
AOC-0503(3M)

- Data rates of up to 100Gbps
- Compliant with 100GBASE-SR4 standards
- Supports EDR 4x link bandwidth
- Compliant with QSFP28 Multi-Sourcing Agreement (MSA) standards
- Supports Digital Diagnostics Monitoring (DDM) for easy status monitoring
- Hot-swappable providing non-stop service



**5-Port Fast Ethernet
PoE Industrial Switch**
IFP-0503

- 4 Fast Ethernet PoE ports and 1 Fast Ethernet fiber port
- Total PoE power budget: 126W, up to 30W per port
- Single-mode fiber with SC connector for transmission of up to 30km
- -40°C to 75°C operating temperature range
- Provides DIN-rail, wall or desktop mounting
- IP30 metal case
- Redundant power inputs with Terminal Block



**8-Port Fast
Ethernet PoE
Industrial Switch**
IFP-0801

- 4 Fast Ethernet PoE ports and 4 Fast Ethernet ports
- Total PoE power budget: 126W, up to 30W per port
- -40°C to 75°C operating temperature range
- Provides DIN-rail, wall or desktop mounting
- IP30 metal case
- Redundant power inputs with Terminal Block and DC Jack



**3-Port Industrial
Gigabit PoE PSE/PD
Switch**
IGP-0310

- 1000Mbps full-duplex, 10/100Mbps full/half-duplex, auto-negotiation, auto-MDI/MDIX
- Provides DIN-rail, wall or desktop mounting
- IP30 metal case
- 6KV surge protection level on each port
- ESD and surge protection



**4-Port Gigabit PoE
Industrial Switch**
IGP-0431

- 10/100/1000Mbps wire speed transmission and reception
- IEEE 802.3af/at/bt PoE compliant to simplify deployment and installation
- 6KV surge protection level on each port
- Supports the PoE auto-check function, which is specially designed to solve the problems of equipment frozen. It can automatically detect the frozen PD equipment and restart the port's output of PoE, and restart the PD device. It gently reduces the maintenance difficulty of engineering.
- -40°C to 75°C operating temperature range
- Supports DDMI SFP transceiver
- ESD and surge protection
- Supports DIN-rail installation



4-Port Gigabit PoE Industrial Switch

IGP-0432

- 10/100/1000Mbps wire speed transmission and reception
- IEEE 802.3af/at PoE compliant to simplify deployment and installation
- 6KV surge protection level on each port
- -40°C to 75°C operating temperature range
- Supports the PoE auto-check function, which is specially designed to solve the problems of equipment frozen
- It can automatically detect the frozen PD equipment and restart the port's output of PoE, and restart the PD device. It gently reduces the maintenance difficulty of engineering.
- ESD and surge protection
- Supports DIN-rail installation



5-Port Gigabit Industrial Switch

IGP-0501

- 1000Mbps full-duplex, 10/100Mbps full/half-duplex, auto-negotiation, auto-MDI/MDIX
- Port 1 - 4 support IEEE 802.3at Power over Ethernet Plus (PoE+)
- Port 1~2 10/100/1000Base-T RJ45(IEEE 802.3bt) PoE 90W
- Provides DIN-rail, wall or desktop mounting
- IP30 metal case
- 6KV surge protection level on each port
- ESD and surge protection



5-Port Gigabit Industrial Switch

IGP-0502

- 1000Mbps full-duplex, 10/100Mbps full/half-duplex, auto-negotiation, auto-MDI/MDIX
- Port 1 - 4 support IEEE 802.3at Power over Ethernet
- Provides DIN-rail, wall or desktop mounting
- IP30 metal case
- 6KV surge protection level on each port
- ESD and surge protection



8-Port Gigabit PoE Industrial Switch

IGP-0801

- 4 Gigabit ports and 4 Gigabit PoE ports
- Total PoE power budget: 126W, up to 30W per port
- Provides DIN-rail, wall or desktop mounting
- IP30 metal case
- Redundant power inputs with Terminal Block
- -40°C to 75°C operating temperature range



6-Port Gigabit PoE Industrial Switch

IES-0610

- 4 Gigabit PoE ports, 1 Gigabit SFP slot and 1 Gigabit RJ45/SFP Combo port
- Total PoE power budget: 126W, up to 30W per port
- -40°C to 75°C operating temperature range
- IP30 metal case
- Redundant power inputs with Terminal Block



6-Port Gigabit PoE Industrial Switch

IES-0620

- 4 Gigabit PoE ports, 1 Gigabit SFP slot and 1 Gigabit RJ45/SFP Combo port
- Total PoE power budget: 126W, up to 30W per port
- -40°C to 75°C operating temperature range
- IP30 metal case
- Supports 12 to 55V DC power inputs
- Redundant power inputs with Terminal Block



8-Port Gigabit PoE Industrial Switch

IGP-0802

- Total PoE power budget: 200W, up to 30W per port
- 1000Mbps full-duplex, 10/100Mbps full/half-duplex, auto-negotiation, auto-MDI/MDIX
- -40°C to 75°C operating temperature range
- Provides DIN-rail, wall or desktop mounting
- IP30 metal case
- Redundant power inputs with Terminal Block



10-Port Gigabit PoE Industrial Switch

IGP-1031

- 10/100/1000Mbps wire speed transmission and reception
- Built-in 8 PoE ports for PoE devices
- 8 Gigabit Ethernet ports and 2 Gigabit SFP slots
- Connection distance of up to 250m at 10Mbps data rate
- Supports policy-based VLAN
- 6KV surge protection level on each port
- ESD and surge protection



10-Port L2 Managed Gigabit PoE Industrial Switch

IGP-1061

- 8 Gigabit PoE ports and 2 Gigabit SFP ports
- Port 1~2 10/100/1000Base-T RJ45(IEEE 802.3bt) PoE 90W
- Port 3~8 support IEEE 802.3at Power over Ethernet Plus (PoE+)
- Compatible with IEEE802.3af/at/bt
- Support L2 management, such as QoS, VLAN, MSTP, Multi-broadcast, ports management and PoE management
- Supports ERPS for ring topology
- 6KV surge protection, 8KV contact /15KV air ESD protection
- Provides DIN-rail, wall or desktop mounting
- -40°C to 75°C operating temperature range



5-Port Fast Ethernet Industrial Switch

IFS-0501

- Provides flexibility of 5x 10/100BASE-TX ports
- 10/100Mbps, full/half-duplex, auto-negotiation, auto-MDI/MDIX
- -40°C to 75°C operating temperature range
- Provides DIN-rail, wall or desktop mounting
- IP30 metal case
- Redundant power inputs with Terminal Block
- Supports 9 to 56V DC power inputs



5-Port Fast Ethernet Industrial Switch

IES-0500

- Provides flexibility of 5x 10/100BASE-TX ports
- -20°C to 70°C operating temperature range
- 10/100Mbps, full/half-duplex, auto-negotiation, auto-MDI/MDIX
- Supports 12 to 48V DC power inputs
- Complies with IEC61000-6-2 EMC Generic standard immunity for Industrial environment



5-Port Fast Ethernet Industrial Switch

IES-0510

- 4 Fast Ethernet ports and 1 Fast Ethernet fiber port
- Multi-mode fiber with SC connector for transmission of up to 2km
- -20°C to 70°C operating temperature range
- Supports 12 to 48V DC power inputs
- Complies with IEC61000-6-2 EMC Generic standard immunity for Industrial environment



8-Port Fast Ethernet Industrial Switch
IFS-0801

- Provides flexibility of 8 x 10/100BASE-TX ports
- 10/100Mbps, full/half-duplex, auto-negotiation, auto-MDI/MDIX
- Provides DIN-rail, wall or desktop mounting
- Redundant power inputs with Terminal Block
- 30°C to 65°C operating temperature range



5-Port Gigabit Industrial Switch
IGU-0501

- 10/100/1000Mbps wire speed transmission and reception
- Supports DDMI SFP transceiver
- 6KV surge protection level on each port
- ESD and surge protection
- Supports DIN-rail installation



6-Port Gigabit Industrial Switch
IES-0600

- 5 Gigabit ports with 1 shared SFP slot and 1 Gigabit SFP slot
- -40°C to 75°C operating temperature range
- IP30 metal case
- Supports 9 to 56V DC power inputs
- Redundant power inputs with Terminal Block



10-Port L2 Plus Managed Gigabit Industrial Switch
IGU-1071

Compact and Flexible Connectivity

- Offers versatile connectivity with 8 10/100/1000Base-T RJ45 ports and 2 1000/2500Base-X SFP slots.
- Robust Power and Environmental Resilience
- Ensures reliable operation with redundant 12-58V DC power supply, advanced surge protection (6KV), and ESD protection (Air-15kV, Contact-8kV).
- Designed for harsh environments with fanless IP40 Din-rail enclosure and wide operating temperature range (-40°C to +75°C).

High Availability and Performance

- Delivers uninterrupted operation through G.8032 ERPS protocol with <20ms recovery time.
- Supports advanced Layer 2 features including VLAN, STP/RSTP/MSTP, Link Aggregation, QoS, and IGMP Snooping for optimized network performance.

Comprehensive Layer 2 and Layer 3 Functionality

- Offers robust Layer 2 management with VLAN, QinQ, port mirroring, ACL, and 802.1X for network segmentation and security.
- Enables advanced Layer 3 routing with IPv4/IPv6 static routing, DHCP server, and other essential protocols.

Advanced Management and Maintenance

- Simplifies configuration and management with user-friendly Web, SNMP, CLI, and Telnet interfaces.
- Supports remote configuration, firmware upgrades, and system monitoring.



20-Port L2 Plus Managed Gigabit Industrial Switch

IGU-2071

High-Density Connectivity and Flexibility

- Offers comprehensive connectivity with 16 10/100/1000Base-T RJ45 and 4 1000/2500Base-X SFP ports.

Robust Power and Environmental Resilience

- Ensures reliable operation with redundant 12-75V DC power supply, advanced surge protection (6kV), and ESD protection (Air-15kV, Contact-8kV).
- Designed for harsh environments with fanless IP40 Din-rail enclosure and wide operating temperature range (-40°C to +80°C).

High Availability and Performance

- Delivers uninterrupted operation through G.8032 ERPS protocol with <20ms recovery time.
- Supports advanced Layer 2 features including VLAN, STP/RSTP/MSTP, Link Aggregation, QoS, and IGMP Snooping for optimized network performance.

Advanced Management and Security

- Simplifies configuration and upgrades with USB one-key functionality.
- Offers robust management options through Web, SNMP, CLI, Telnet, and SSH interfaces.
- Provides enhanced security with 802.1X authentication, port isolation, and ACL.

Robust Layer 3 Capabilities

- Enables advanced network routing with IPv4/IPv6 static routing and DHCP server.



IGU-2072, 20-Port L2 Plus Managed Industrial Switch

IGU-2072

- Offers comprehensive connectivity with 8 10/100/1000Base-T RJ45, 8 100/1000Base-X SFP ports and 4 1G/2.5GBase-X SFP+ ports.
- Ensures reliable operation with redundant 12-75V DC power supply, advanced surge protection (6kV), and ESD protection (Air-15kV, Contact-8kV).
- Designed for harsh environments with fanless IP40 Din-rail enclosure and wide operating temperature range (-40°C to +80°C).
- Delivers uninterrupted operation through G.8032 ERPS protocol with <20ms recovery time.
- Supports advanced Layer 2 features including VLAN, STP/RSTP/MSTP, Link Aggregation, QoS, and IGMP Snooping for optimized network performance.
- Simplifies configuration and upgrades with USB one-key functionality.
- Offers robust management options through Web, SNMP, CLI, Telnet, and SSH interfaces.
- Provides enhanced security with 802.1X authentication, port isolation, and ACL.
- Enables advanced network routing with IPv4/IPv6 static routing and DHCP server.



28-Port L2 Plus Managed Gigabit Fiber Industrial Switch
IGU-2872

High-Density Connectivity and Flexibility

- Offers comprehensive connectivity options with 16 100/1000Base-X SFP, 8x Gigabit SFP/RJ45 Combo, and 4*1G/2.5GBase-X SFP ports.

Enhanced Reliability and Performance

- Ensures uninterrupted operation with redundant AC/DC power supply, advanced surge protection (6KV), and ESD protection (Air-15kV, Contact-8kV).
- Delivers high availability through G.8032 ERPS protocol with <20ms recovery time.
- Supports advanced Layer 2 features including VLAN, STP/RSTP/MSTP, Link Aggregation, QoS, and IGMP Snooping for optimized network performance.

Advanced Management and Security

- Simplifies configuration and upgrades with USB one-key functionality.
- Offers robust management options through Web, SNMP, CLI, Telnet, and SSH interfaces.
- Provides enhanced security with 802.1X authentication, port isolation, and ACL.

Robust Layer 3 Capabilities

- Enables advanced network routing with IPv4/IPv6 static routing and DHCP server.

Environmental Adaptability

- Designed for harsh environments with fanless IP40 rack-mount enclosure and wide operating temperature range (-40°C to +80°C).



IGX-2072, 20-Port L2 Plus Managed Industrial Switch, 4 x 1/2.5/10GbE SFP+h
IGX-2072

- Offers comprehensive connectivity with 8 10/100/1000Base-T RJ45, 8 100/1000Base-X SFP ports and 4 1G/2.5G/10GBase-X SFP+ ports.
- Ensures reliable operation with redundant 12-75V DC power supply, advanced surge protection (6KV), and ESD protection (Air-15kV, Contact-8kV).
- Designed for harsh environments with fanless IP40 Din-rail enclosure and wide operating temperature range (-40°C to +80°C).
- Delivers uninterrupted operation through G.8032 ERPS protocol with <20ms recovery time.
- Supports advanced Layer 2 features including VLAN, STP/RSTP/MSTP, Link Aggregation, QoS, and IGMP Snooping for optimized network performance.
- Simplifies configuration and upgrades with USB one-key functionality.
- Offers robust management options through Web, SNMP, CLI, Telnet, and SSH interfaces.
- Provides enhanced security with 802.1X authentication, port isolation, and ACL.
- Enables advanced network routing with IPv4/IPv6 static routing and DHCP server."



10-Port L2 Managed Gigabit Ethernet Outdoor Enclosure PoE Switch
OSW-1061

- 8- Port 10/100/1000 Ethernet PoE + Gigabit SFP+ slots x 2
- 1000Mbps full-duplex, 10/100Mbps full/half-duplex, auto-negotiation, auto-MDI/MDIX
- IEEE 802.3af/at PoE compliant to simplify deployment and installation
- IEEE 802.3x Flow Control protects against lost packets for reliable data transmission
- Web-based Management
- 6KV surge protection, 6KV contact / 8KV air ESD protection
- Weatherproof IP55-rated Box housing



10-Port Gigabit Ethernet Outdoor Enclosure PoE Switch
OSW-1031

- 8- Port 10/100/1000 Ethernet PoE + Gigabit SFP+ slots x 2
- 1000Mbps full-duplex, 10/100Mbps full/half-duplex, auto-negotiation, auto-MDI/MDIX
- IEEE 802.3af/at PoE compliant to simplify deployment and installation
- IEEE 802.3x Flow Control protects against lost packets for reliable data transmission
- 6KV surge protection, 6KV contact / 8KV air ESD protection
- Weatherproof IP55-rated Box housing



RJ45 to SFP Fast Ethernet Industrial Media Converter
IEC-4000

- Transfers data from 10/100Base-TX copper to fiber interfaces
- Built-in LFP (Link Fault Pass-through) (LLCF/LLR) Technology
- -40°C to 75°C operating temperature range
- Provides DIN-rail or panel mounting
- ESD and surge protection



RJ45 to SC Fast Ethernet Industrial Media Converter
IEC-4001

- Transfers data from 10/100Base-TX copper to fiber interfaces
- Multi-mode fiber with SC connector for transmission of up to 2km
- Built-in LFP (Link Fault Pass-through) (LLCF/LLR) Technology
- -40°C to 75°C operating temperature range
- Provides DIN-rail or panel mounting
- ESD and surge protection



RJ45 to ST Fast Ethernet Industrial Media Converter
IEC-4002

- Transfers data from 10/100Base-TX copper to fiber interfaces
- Multi-mode fiber with ST connector for transmission of up to 2km
- Built-in LFP (Link Fault Pass-through) (LLCF/LLR) Technology
- ESD and surge protection
- Provides DIN-rail or panel mounting
- -40°C to 75°C operating temperature range



RJ45 to SC Fast Ethernet Industrial Media Converter
IEC-4301

- Transfers data from 10/100Base-TX copper to fiber interfaces
- Single-mode fiber with SC connector for transmission of up to 30km
- Built-in LFP (Link Fault Pass-through) (LLCF/LLR) Technology
- Provides DIN-rail or panel mounting
- -40°C to 75°C operating temperature range
- ESD and surge protection



RJ45 to SFP Gigabit Industrial PoE Media Converter

IGC-0101

- With 1*10/100/1000M PoE port and 1*1000M SFP port
- Supports relay alarm for power off, network broken and PoE off;
- Supports 6KV surge protection, 6KV contact / 8KV air ESD protection;
- Supports working temperature -40°C~75°C



RJ45 to SFP Gigabit Industrial Media Converter

IGC-0102

- 10/100/1000Mbps wire speed transmission and reception
- -40°C to 75°C operating temperature range
- 6KV surge protection level on each port
- ESD and surge protection
- Supports DDMI SFP transceiver
- Supports DIN-rail installation



155Mbps Multi-mode Industrial SFP Transceiver, 2km
SFP-2100

- 850nm
- 100Base-FX Multi-mode fiber for the link up to 2km
- Supports Digital Diagnostics Monitoring (DDM) for easy status monitoring
- Provides duplex LC connector
- Hot-swappable
- -40°C to 85°C operating temperature range
- Compatible with SFP Multi-Sourcing Agreement (MSA) standards



155Mbps Multi-mode Industrial SFP Transceiver, 2km
SFP-2200

- 1310nm
- 100Base-FX Multi-mode fiber for the link up to 2km
- Supports Digital Diagnostics Monitoring (DDM) for easy status monitoring
- Provides duplex LC connector
- Hot-swappable providing non-stop service
- -40°C to 85°C operating temperature range
- Compatible with SFP Multi-Sourcing Agreement (MSA) standards



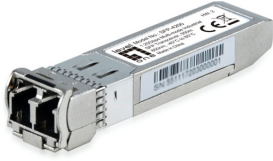
155Mbps Single-mode Industrial SFP Transceiver
SFP-2230 (30KM)
SFP-2260 (60KM)
SFP-2280 (80KM)

- 1310nm
- Supports Digital Diagnostics Monitoring (DDM) for easy status monitoring
- Provides duplex LC connector
- Hot-swappable providing non-stop service
- -40°C to 85°C operating temperature range
- Compatible with SFP Multi-Sourcing Agreement (MSA) standards



155Mbps Single-mode Industrial SFP Transceiver
SFP-2300 (20KM)
SFP-2310 (100KM)
SFP-2320 (120KM)

- 1310nm
- Supports Digital Diagnostics Monitoring (DDM) for easy status monitoring
- Provides duplex LC connector
- Hot-swappable providing non-stop service
- -40°C to 85°C operating temperature range
- Compatible with SFP Multi-Sourcing Agreement (MSA) standards



1.25Gbps Multi-mode Industrial SFP Transceiver, 550m

SFP-4200

- 1550nm
- 1000Base-SX Multi-mode fiber for the link up to 550m
- Supports Digital Diagnostics Monitoring (DDM) for easy status monitoring
- Provides duplex LC connector
- Hot-swappable providing non-stop service
- Compatible with SFP Multi-Sourcing Agreement (MSA) standards



1.25Gbps Single-mode Industrial SFP Transceiver

SFP-4210 (10KM)

SFP-4240 (40KM)

- 1310nm
- IEEE 802.3z Gigabit Ethernet compliant
- Supports Digital Diagnostics Monitoring (DDM) for easy status monitoring
- Provides duplex LC connector
- Hot-swappable providing non-stop service
- -40°C to 85°C operating temperature range
- Compatible with SFP Multi-Sourcing Agreement (MSA) standards



1.25Gbps Single-mode Industrial SFP Transceiver, 80km, 1550nm, -40°C to 85°C

SFP-4270

- 1550nm
- Supports Digital Diagnostics Monitoring (DDM) for easy status monitoring
- Provides duplex LC connector
- Hot-swappable providing non-stop service
- -40°C to 85°C operating temperature range
- Compatible with SFP Multi-Sourcing Agreement (MSA) standards



1.25Gbps Single-mode BIDI Industrial SFP Transceiver, 10km

SFP-4310

- TX 1310nm / RX 1550nm
- 1.25Gbps Bi-directional single fiber link
- Supports Digital Diagnostics Monitoring (DDM) for easy status monitoring
- Hot-swappable providing non-stop service
- Provides simplex LC connector
- -40°C to 85°C operating temperature range
- Compatible with SFP Multi-Sourcing Agreement (MSA) standards



1.25Gbps Single-mode BIDI Industrial SFP Transceiver, 10km

SFP-4320

- TX 1550nm / RX 1310nm
- 1.25Gbps Bi-directional single fiber link
- Supports Digital Diagnostics Monitoring (DDM) for easy status monitoring
- Hot-swappable providing non-stop service
- Provides simplex LC connector
- -40°C to 85°C operating temperature range
- Compatible with SFP Multi-Sourcing Agreement (MSA) standards



1.25Gbps Single-mode BIDI Industrial SFP Transceiver, 20km, -40°C to 85°C

SFP-4330

- TX 1310nm / RX 1550nm
- 1.25Gbps Bi-directional single fiber link
- Supports Digital Diagnostics Monitoring (DDM) for easy status monitoring
- Hot-swappable providing non-stop service
- Provides simplex LC connector
- -40°C to 85°C operating temperature range
- Compatible with SFP Multi-Sourcing Agreement (MSA) standards



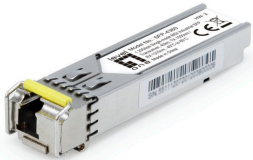
1.25Gbps Single-mode BIDI Industrial SFP Transceiver, 20km
SFP-4340

- TX 1550nm / RX 1310nm
- 1.25Gbps Bi-directional single fiber link
- Supports Digital Diagnostics Monitoring (DDM) for easy status monitoring
- Hot-swappable providing non-stop service
- Provides simplex LC connector
- -40°C to 85°C operating temperature range
- Compatible with SFP Multi-Sourcing Agreement (MSA) standards



1.25Gbps Single-mode BIDI Industrial SFP Transceiver, 40km
SFP-4350

- TX 1310nm / RX 1550nm
- 1.25Gbps Bi-directional single fiber link
- Supports Digital Diagnostics Monitoring (DDM) for easy status monitoring
- Hot-swappable providing non-stop service
- Provides simplex LC connector
- -40°C to 85°C operating temperature range
- Compatible with SFP Multi-Sourcing Agreement (MSA) standards



1.25Gbps Single-mode BIDI Industrial SFP Transceiver, 40km
SFP-4360

- TX 1550nm / RX 1310nm
- 1.25Gbps Bi-directional single fiber link
- Supports Digital Diagnostics Monitoring (DDM) for easy status monitoring
- Hot-swappable providing non-stop service
- Provides simplex LC connector
- -40°C to 85°C operating temperature range
- Compatible with SFP Multi-Sourcing Agreement (MSA) standards



1.25Gbps Single-mode BIDI Industrial SFP Transceiver, 60km, , -40°C to 85°C
SFP-4370

- TX 1310nm / RX 1550nm
- 1.25Gbps Bi-directional single fiber link
- Supports Digital Diagnostics Monitoring (DDM) for easy status monitoring
- Hot-swappable providing non-stop service
- Provides simplex LC connector
- -40°C to 85°C operating temperature range
- Compatible with SFP Multi-Sourcing Agreement (MSA) standards



1.25Gbps Single-mode BIDI Industrial SFP Transceiver, 60km, , -40°C to 85°C
SFP-4380

- TX 1550nm / RX 1310nm
- 1.25Gbps Bi-directional single fiber link
- Supports Digital Diagnostics Monitoring (DDM) for easy status monitoring
- Hot-swappable providing non-stop service
- Provides simplex LC connector
- -40°C to 85°C operating temperature range
- Compatible with SFP Multi-Sourcing Agreement (MSA) standards



GEMINI Zoom IP Network Camera
FCS-5096

- 60 fps High Frame Rate (HFR) video in 1080p
- Video compression: H.264, H.265
- Supports 4.3X optical zoom
- Features WDR (Wide Dynamic Range) to enhance visibility under extremely bright or dark environments
- Vandal-proof IK10-rated housing
- Weatherproof IP67-rated housing
- Built-in infrared LEDs for night viewing up to 50m
- Built-in Micro SDHC/SDXC card slot for local storage



GEMINI Zoom IP Network Camera
FCS-5060

- Weatherproof IP66-rated housing
- 2-Megapixel (1920 x 1080) high-definition resolution
- Video compression: H.264, MJPEG
- Features WDR (Wide Dynamic Range) to enhance visibility under extremely bright or dark environments
- Built-in infrared LEDs for night viewing up to 30m
- Digital input/output (1DI/1DO) for sensor and alarm
- Power support: PoE (IEEE 802.3af)
- Supports 4X optical zoom



GEMINI Fixed IP Network Camera
FCS-5092 (5-MEGAPIXEL)

- 5/8-Megapixel high-definition resolution
- Video compression: H.264/H.265
- Built-in infrared LEDs for night viewing up to 50m
- Features WDR (Wide Dynamic Range) to enhance visibility under extremely bright or dark environments
- IEEE 802.3af PoE compliant to simplify deployment and installation
- Weatherproof IP67-rated housing
- Built-in Micro SDHC/SDXC card slot for local storage



GEMINI Fixed Bullet IP Network Camera
FCS-5201

- 2-Megapixel high-definition resolution
- Supports motion detection (human and vehicle) and event notification
- Built-in infrared LEDs for night viewing up to 30m
- Video compression: H.264, H.265, MJPEG
- Weatherproof IP67-rated housing



GEMINI Fixed IP Network Camera
FCS-5202

- 4-Megapixel high-definition resolution
- Video compression: H.264, H.265, MJPEG
- Features WDR (Wide Dynamic Range) to enhance visibility under extremely bright or dark environments
- Built-in infrared LEDs for night viewing up to 30m
- Weatherproof IP67-rated housing



GEMINI Fixed IP Network Camera
FCS-5212

- 6-Megapixel high-definition resolution
- Video compression: H.264, H.265, MJPEG
- Supports 3 video streams simultaneously
- Supports 4.3X optical zoom
- Features WDR (Wide Dynamic Range) to enhance visibility under extremely bright or dark environments
- Weatherproof IP67-rated housing
- Vandal-proof IK10-rated housing
- Built-in infrared LEDs for night viewing up to 50m
- Supports iPhone/Android phone remote viewing over the Internet



GEMINI Zoom Bullet IP Network Camera
FCS-5222

- 2-Megapixel high-definition resolution
- Built-in Micro SD/SDHC/SDXC card slot for local storage
- Motorized Varifocal 2.7-13mm Lens
- Built-in infrared LEDs for night viewing up to 30m
- Video compression: H.264, H.265, MJPEG
- Weatherproof IP67-rated housing



GEMINI Fixed IP Network Camera
FCS-5095

- 8-Megapixel high-definition resolution
- Video compression: H.264/H.265
- Supports 4.3X optical zoom
- Features WDR (Wide Dynamic Range) to enhance visibility under extremely bright or dark environments
- Vandal-proof IK10-rated housing
- Weatherproof IP67-rated housing
- Built-in infrared LEDs for night viewing up to 50m
- Built-in Micro SDHC/SDXC card slot for local storage
- Dual power support: 12V DC/PoE (IEEE 802.3at)



GEMINI Fixed Dome IP Network Camera
FCS-3073

- Weatherproof IP66-rated housing
- 2-Megapixel (1920 x 1080) high-definition resolution
- Video compression: H.264/MJPEG
- IEEE 802.3af PoE compliant to simplify deployment and installation
- Removable IR-cut filter for day and night surveillance
- Supports IPv4/IPv6 network operation
- Vandal-proof IK10-rated housing
- Built-in Micro SD/SDHC card slot for local storage



GEMINI Fixed Dome IP Network Camera
FCS-4203

- 2-Megapixel (1920 x 1080) high-definition resolution
- Video compression: H.264/H.265/MJPEG
- Supports 4.3X optical zoom
- Built-in infrared LEDs for night viewing up to 30m
- Vandal-proof IK10-rated housing
- Power support: PoE (IEEE 802.3af)
- Built-in Micro SD/SDHC card slot for local storage
- Weatherproof IP67-rated housing



GEMINI Fixed IP Network Camera

FCS-3402

- 2-Megapixel high-definition resolution
- Video compression: H.264, H.265, MJPEG
- Weatherproof IP67-rated housing
- Vandal-proof IK10-rated housing
- Built-in Micro SDHC/SDXC card slot for local storage
- Supports iPhone/Android phone remote viewing over the Internet



GEMINI Fixed Dome IP Network Camera

FCS-3403

- 4-Megapixel high-definition resolution
- Video compression: H.264, H.265, MJPEG
- Features WDR (Wide Dynamic Range) to enhance visibility under extremely bright or dark environments
- Built-in Micro SD/SDHC/SDXC card slot for local storage
- Built-in infrared LEDs for night viewing up to 30m
- Weatherproof IP67-rated housing
- Free surveillance and CMS (Central Management System) software packages with 64-channel license



GEMINI Fixed Dome IP Network Camera

FCS-3404

- 6-Megapixel high-definition resolution
- Video compression: H.264, H.265, MJPEG
- Built-in infrared LEDs for night viewing up to 30m
- Features WDR (Wide Dynamic Range) to enhance visibility under extremely bright or dark environments
- Weatherproof IP67-rated housing
- Power support: PoE (IEEE 802.3af)
- Free CMS (Central Management System) software with 64-channel license



GEMINI Fixed Dome IP Network Camera

FCS-3406

- 60 fps High Frame Rate (HFR) video in 1080p
- Video compression: H.264, H.265
- Supports 4.3X optical zoom
- Features WDR (Wide Dynamic Range) to enhance visibility under extremely bright or dark environments
- Vandal-proof IK10-rated housing
- Weatherproof IP67-rated housing
- Built-in infrared LEDs for night viewing up to 30m
- Built-in Micro SDHC/SDXC card slot for local storage



HUBBLE Fixed Dome IP Network Camera

FCS-3054

- 3-Megapixel high-definition resolution
- Vandal-proof IK08-rated housing
- Video compression: H.264, MJPEG
- Power support: PoE (IEEE 802.3af)
- Built-in Micro SDHC/SDXC card slot for local storage



HUBBLE Fixed Dome IP Network Camera

FCS-3306

- 3-Megapixel high-definition resolution
- Video compression: H.264/H.265
- Built-in infrared LEDs for night viewing up to 30m
- Features WDR (Wide Dynamic Range) to enhance visibility under extremely bright or dark environments
- Vandal-proof IK10-rated housing
- Weatherproof IP68-rated housing



**GEMINI Fixed Dome
IP Network Camera**
FCS-3085

- 4-Megapixel high-definition resolution
- 2.8-12 mm adjustable Vari-focal length for wide angle surveillance
- Power support: PoE (IEEE 802.3af)
- Video compression: H.264, MJPEG
- Vandal-proof IK10-rated housing
- Built-in infrared LEDs for night viewing up to 30m
- Built-in Micro SDHC/SDXC card slot for local storage
- Weatherproof IP66-rated housing
- Supports motion detection (Intrusion/camera tampering/line crossing) and event notification



**GEMINI Fixed Dome
IP Network Camera**
FCS-3087

- 5-Megapixel high-definition resolution
- Built-in infrared LEDs for night viewing up to 30m
- Removable IR-cut filter for day and night surveillance
- Video compression: H.264, MJPEG
- Power support: PoE (IEEE 802.3af)
- Features WDR (Wide Dynamic Range) to enhance visibility under extremely bright or dark environments
- Vandal-proof IK10-rated housing
- Weatherproof IP66-rated housing



**GEMINI Zoom Dome
IP Network Camera**
FCS-3461

- 2-Megapixel high-definition resolution
- Built-in Micro SD/SDHC/SDXC card slot for local storage
- Motorized Varifocal 2.8-12mm Lens
- Built-in infrared LEDs for night viewing up to 40m
- Video compression: H.264, H.265, MJPEG
- Weatherproof IP67-rated housing



**GEMINI Zoom Dome
IP Network Camera**
FCS-3616

- 6-Megapixel high-definition resolution
- Built-in Micro SD/SDHC/SDXC card slot for local storage
- Motorized Varifocal 2.8-12mm Lens
- Built-in infrared LEDs for night viewing up to 40m
- Video compression: H.264, H.265, MJPEG
- Weatherproof IP67-rated housing



**GEMINI Fixed Dome
IP Network Camera**
FCS-3098 (8-MEGAPIXEL)

- 8-Megapixel high-definition resolution
- Video compression: H.264/H.265
- Supports 4.3X optical zoom
- Features WDR (Wide Dynamic Range) to enhance visibility under extremely bright or dark environments
- Vandal-proof IK10-rated housing
- Weatherproof IP67-rated housing
- Built-in Micro SDHC/SDXC card slot for local storage
- Built-in infrared LEDs for night viewing up to 30m
- Dual power support: 12V DC/PoE (IEEE 802.3af)



**HUBBLE Fixed Dome
IP Network Camera**
FCS-3307

- 5-Megapixel high-definition resolution
- Video compression: H.264/H.265
- Built-in infrared LEDs for night viewing up to 30m
- Features WDR (Wide Dynamic Range) to enhance visibility under extremely bright or dark environments
- Weatherproof IP68-rated housing
- Vandal-proof IK10-rated housing
- Dual power support: 12V DC/PoE (IEEE 802.3af)



GEMINI Fixed Dome IP Network Camera

FCS-3096

- 8-Megapixel high-definition resolution
- Video compression: H.264/H.265
- Weatherproof IP67-rated housing
- Vandal-proof IK10-rated housing
- Built-in infrared LEDs for night viewing up to 50m
- Dual power support: 12V DC/PoE (IEEE 802.3af)



HUBBLE PTZ Dome IP Network Camera

FCS-4043

- 3-Megapixel high-definition resolution
- Video compression: H.264, H.265, MJPEG
- Features WDR (Wide Dynamic Range) to enhance visibility under extremely bright or dark environments
- Supports 350° pan, 180° tilt and 10X optical zoom
- Dual power support: 12V DC/PoE (IEEE 802.3af)
- Weatherproof IP67-rated housing
- Removable IR-cut filter for day and night surveillance
- Built-in Micro SDHC/SDXC card slot for local storage
- Free surveillance and CMS (Central Management System) software packages with 64-channel license



HUBBLE PTZ IP Network Camera

FCS-4048

- 2-Megapixel (1920 x 1080) high-definition resolution
- Video compression: H.264/MJPEG
- Supports 33X optical zoom
- Built-in infrared LEDs for night viewing up to 150m
- Weatherproof IP66-rated housing
- Vandal-proof IK10-rated housing
- 360° pan and 220° tilt movements allow for a wide range of monitoring angles
- Triple power support: 12V DC/24V AC/PoE (IEEE 802.3at 60W)



GEMINI PTZ IP Network Camera

FCS-4051

- 2-Megapixel (1920 x 1080) high-definition resolution
- Video compression: H.264/MJPEG
- Built-in infrared LEDs for night viewing up to 100m
- Built-in Micro SD/SDHC card slot for local storage
- Supports 20X optical zoom
- Dual power support: 12V DC/PoE (IEEE 802.3at)
- Weatherproof IP66-rated housing
- 360° pan and 105° tilt movements allow for a wide range of monitoring angles



HUBBLE PTZ Dome IP Network Camera

FCS-4042

- 2-Megapixel (1920 x 1080) high-definition resolution
- 360° pan and 190° tilt movements allow for a wide range of monitoring angles
- Supports 30X optical zoom
- Features WDR (Wide Dynamic Range) to enhance visibility under extremely bright or dark environments
- Features 3DNR (3-Dimension Noise Reduction) to produce extremely clear picture quality even under low light condition
- 3D privacy masks for private area protection
- Removable IR-cut filter for day and night surveillance
- Built-in Micro SDHC/SDXC card slot for local storage
- Dual power support: 24V AC/PoE (IEEE 802.3at)
- Weatherproof IP67-rated housing



GEMINI PTZ Dome IP Network Camera

FCS-4072

- 4-Megapixel high-definition resolution
- Built-in infrared LEDs for night viewing up to 200m
- Built-in Micro SD/SDHC card slot for local storage
- Dual power support: 24V AC/PoE
- Video compression: H.265, H.264, MJPEG
- Weatherproof IP66-rated housing
- Supports 32X optical zoom
- PTZ 360°



**HUBBLE PTZ IP
Network Camera**
FCS-4080

- 5-Megapixel high-definition resolution
- Video compression: H.264, H.265, MJPEG
- Supports 36X optical zoom
- Built-in infrared LEDs for night viewing up to 150m
- Weatherproof IP66-rated housing
- Vandal-proof IK10-rated housing



**HUBBLE Panoramic
Dome IP Network
Camera**
FCS-3094

- Built-in Micro SDHC/SDXC card slot for local storage
- 10-Megapixel high-definition resolution
- Offers various 360°/180° video modes for panoramic wide-angle surveillance
- Features WDR (Wide Dynamic Range) to enhance visibility under extremely bright or dark environments
- Removable IR-cut filter for day and night surveillance
- Dual power support: 12V DC/PoE (IEEE 802.3af)
- Video compression: H.264/MJPEG



**GEMINI 4-Channel
PoE Network Video
Recorder**
NVR-0504

- Video compression: H.264/H.265
- Supports 4k2k HDMI local display
- 1 x 3.5" hard drive bay supports disk capacity of up to 6TB
- Built-in 4 PoE ports for PoE devices
- Supports video resolutions up to 8 megapixels



**GEMINI 8-Channel
PoE Network Video
Recorder**
NVR-0508

- Supports video resolutions up to 8 megapixels
- Supports 4k2k HDMI local display
- Built-in 8 PoE ports for PoE devices
- 2 x 3.5" hard drive bays support disk capacity of up to 6TB
- Video compression: H.264/H.265/MPEG4
- Built



**GEMINI 16-Channel
Network Video
Recorder**
NVR-1316

- Supports video resolutions up to 12MP
- Video compression: H.264/H.265/MPEG4
- Supports 4k2k HDMI local display
- Display mode: Live view/playback/full screen
- 4 x 3.5" hard drive bays support disk capacity of up to 6TB



**GEMINI 32-Channel
Network Video
Recorder**
NVR-1332

- Supports video resolutions up to 12 megapixels
- Video compression: H.265, H.264, MPEG4
- Supports 4k2k HDMI local display
- 4 x 3.5" HDD bays support disk capacity of up to 8TB
- Display mode: Live view/playback/full screen
- Free CMS (Central Management System) software with 64-channel license



GEMINI 32-Channel Network Video Recorder

NVR-1334

- Video compression: H.264, H.265, MJPEG
- 12-Megapixel high-definition resolution
- Supports 1080p HDMI local display
- Supports PTZ/preset point/preset sequence
- Free CMS (Central Management System) software with 64-channel license



GEMINI 32-Channel Network Video Recorder, 16 Port PoE

NVR-0411

- 4-ch facial recognition for face picture
- 2-ch video analysis for human and vehicle recognition to reduce false alarm
- Supports video resolutions up to 12 megapixels
- Video compression: H.265, H.264
- Supports 8K HDMI local display
- 4 SATA interfaces for HDD connection (up to 10 TB capacity per HDD)



GEMINI 32-Channel Network Video Recorder

NVR-0732

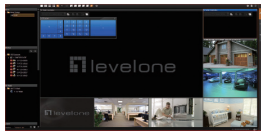
- Supports video resolutions up to 12 megapixels
- Video compression: H.265, H.264, MPEG4
- Supports 4k2k HDMI local display
- Provides RAID (0/1/5/10) technology for advanced data security and improved performance
- 8 x 3.5" hard drive bays support disk capacity of up to 10TB



GEMINI 64-Channel Network Video Recorder

NVR-0764

- Supports video resolutions up to 12 megapixels
- Video compression: H.265, H.264, MPEG4
- Supports 4k2k HDMI local display
- Provides RAID (0/1/5/10) technology for advanced data security and improved performance
- 8 x 3.5" hard drive bays support disk capacity of up to 10TB



OneSecure Central Management System

FCS-9300

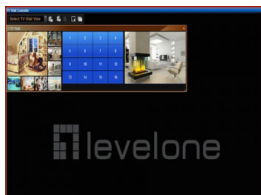
- Manage unlimited number of NVR servers
- Live view local up to 64 Channels
- Synchronized playback local up to 64 Channels
- Export video with RAW and AVI formats
- Event trigger, response and notification
- Mobile Client, Web Client, Workstation
- Location-based management with eMap
- TV Wall support by additional software license



OneSecure Surveillance Management Software

FCS-9364

- Free bundle 64 Channels. License fee is required to unlock additional channel - Maximum up to 100 Channels total.
- Recording up to 100 Channels
- Live view local up to 100 Channels, remote up to 100 Channels
- Event trigger, response and notification
- Mobile Client, Web Client, Workstation
- Location-based management with eMap



Central Management System

FCS-9310

- Deliver the true value of high megapixel cameras Support unlimited TV Wall Servers
- Support up to unlimited channels
- Layout: 1, 4, 5, 6, 8, 9, 10, 12, 16, 18, 24, 25, 35, 36, 48, 49, 64, Custom
- H/W Version: 1
- Flexible TV Wall server layout management, adjustable size and position
- Display e-Maps with camera icons and live view



4-Channel Video Encoder, 802.3af PoE
FCS-7004

- Supports 2 video streams simultaneously
- Video compression: H.264/MJPEG
- Dual power support: 12V DC/PoE (IEEE 802.3af)
- Built-in Micro SD/SDHC/SDXC card slot for local storage
- Supports RS-485/422 serial communication



Video Decoder
DSS-1000

- Supports video resolutions up to 10 megapixels
- Supports 1080p HDMI local display
- Live view of up to 16 channels
- BNC connector for analog video output
- Dual power support: 12V DC/PoE (IEEE 802.3af)
- VESA standards compliant



1-Channel BNC over Fiber Optic Extender Kit, 20km
AVF-1101

- Transmits analogue video signal over single fiber cable
- Uncompressed high quality video transmission
- Transmit up to 20 km without optical attenuation
- No RF interference or signal degradation over optical fiber
- No EMI and electromagnetic interference
- LED indicator status for instance system monitoring
- True Plug & Play design facilitates ease of installation
- -25°C to 75°C operating temperature range



4-Channel BNC over Fiber Optic Extender Kit, 20km
AVF-1401

- Transmits analogue video signal over single fiber cable
- Uncompressed high quality video transmission
- Transmit up to 20 km without optical attenuation
- No RF interference or signal degradation over optical fiber
- No EMI and electromagnetic interference
- LED indicator status for instance system monitoring
- True Plug & Play design facilitates ease of installation
- -25°C to 75°C operating temperature range



ACCESSORY





8-Channel BNC over Fiber Optic Extender Kit, 20km

AVF-1801

- Transmits analogue video signal over single fiber cable
- Uncompressed high quality video transmission
- Transmit up to 20 km without optical attenuation
- No RF interference or signal degradation over optical fiber
- No EMI and electromagnetic interference
- LED indicator status for instance system monitoring
- True Plug & Play design facilitates ease of installation
- -25°C to 75°C operating temperature range



**Varifocal Lens,
Megapixel, 2.7-10mm**
CAS-1300

- Megapixel 1/3" CCD high-definition (HD) resolution
- 2.7-10 mm adjustable Vari-focal length for wide angle surveillance
- F-1.4 Auto-iris automatic lighting control for high image quality
- Provides IR correction feature suitable for day and night viewing



Varifocal Lens
CAS-1400

- 2-Megapixel (1600 x 1200) high-definition resolution
- 2.8-12 mm adjustable Vari-focal length for wide angle surveillance
- F-1.4 Auto-iris automatic lighting control for high image quality
- Provides IR correction feature suitable for day and night viewing



IP SURVEILLANCE



**4-Channels
Surveillance Kit**
DSK-4001

- 4 x channels Analog Video input
- 2-Megapixel high-definition resolution
- One 3.5 disk slot supports disk capacity of up to 6TB
- Built-in infrared LEDs for night viewing up to 30m
- Compatible with HDTVI, AHD, HDCVI and CVBS analog cameras
- Supports iPhone/Android phone remote viewing over the Internet
- H.264 compression for efficient data transfer and storage
- Built-in USB port for backup, support mouse
- Weatherproof IP66-rated housing
- Supports VGA, HDMI output



**8-Channels
Surveillance Kit**
DSK-8001

- 8 x channels Analog Video input
- 2-Megapixel high-definition resolution
- One 3.5 disk slot supports disk capacity of up to 6TB
- Built-in infrared LEDs for night viewing up to 30m
- Compatible with HDTVI, AHD, HDCVI and CVBS analog cameras
- Supports iPhone/Android phone remote viewing over the Internet
- H.264 compression for efficient data transfer and storage
- Built-in USB port for backup, support mouse
- Weatherproof IP66-rated housing
- Supports VGA, HDMI output

ANALOG CAMERAS



**4-in-1 Fixed Dome
CCTV Analog
Camera**
ACS-5302

- 1/3" CMOS image sensor
- 1080P FHD resolution
- Supports AHD, HDTVI, HDCVI and CVBS video formats
- Removable IR-cut filter for day and night surveillance
- Built-in infrared LEDs for night viewing up to 30m



**4-in-1 Fixed CCTV
Analog Camera**
ACS-5602

- 1/3" CMOS image sensor
- 1080P FHD resolution
- Supports AHD, HDTVI, HDCVI and CVBS video formats
- Removable IR-cut filter for day and night surveillance
- Built-in infrared LEDs for night viewing up to 30m



Gigabit Wireless LAN Controller
WAC-2003

- Centralized management of up to 300 APs
- Up to 4 WAN interfaces with load balancing function
- Client isolation allows strict control of access to wireless devices on the network
- Supports gateway/router mode
- Load balancing across multiple APs
- Built-in robust firewall to protect Internet access against intruders
- Captive Portal function provides a convenient method of authentication for guest users



Gigabit Ethernet Wireless LAN Controller
WAC-2010

- Centralized management of up to 128 APs
- Client isolation allows strict control of access to wireless devices on the network
- Supports gateway/router mode
- Load balancing across multiple APs
- Built-in robust firewall to protect Internet access against intruders
- Enables Auto-Roaming for wireless network



Gigabit Ethernet Wireless LAN Controller, Manage up to 256 Aps
WAC-2013

- Centralized management of up to 256 APs
- Client isolation allows strict control of access to wireless devices on the network
- Supports gateway/router mode
- Load balancing across multiple APs
- Built-in robust firewall to protect Internet access against intruders
- Enables Auto-Roaming for wireless networks



AC900 5GHz Outdoor PoE Wireless Access
WAB-8010

- Share your wireless network up to 867Mbps
- Compatible with IEEE 802.11ac Wave 2 wireless standards
- MU-MIMO technology greatly enhances WLAN performance for all clients
- Transmission distance of up to 3.5km for 5GHz
- Dual power support: 12V DC/PoE (IEEE 802.3at)
- Provides up to 4 SSIDs to separate network traffic and enhance security
- Weatherproof IP65-rated housing



N300 2.4GHz Outdoor PoE Wireless Access Point, Controller Managed

WAB-6010

- Share your wireless network up to 300Mbps
- Compatible with IEEE 802.11b/g/n wireless standards
- Multi-operation modes to suit different wireless applications
- Dual power support: 12V DC/PoE (IEEE 802.3at)
- Weatherproof IP65-rated housing
- Provides up to 4 SSIDs to separate network traffic and enhance security



AC1200 Dual Band Outdoor PoE Wireless Access Point, Controller Managed

WAB-8011

- Share your wireless network up to 1200Mbps
- Compatible with IEEE 802.11a/b/g/n/ac wireless standards
- Dual band technology reduces interference, providing reliable connections
- Router/AP/Repeater/WISP operation modes to suite different wireless applications
- Provides up to 8 SSIDs to separate network traffic and enhance security
- Weatherproof IP65-rated housing



AX3000 Dual Band Wi-Fi 6 Outdoor PoE Wireless Access Point

WAB-8021

- Provides wireless speeds of up to 3000Mbps(574Mbps in 2.4GHz/2401Mbps in 5GHz)
- OFDMA and MU-MIMO support
- Compatible with IEEE 802.11a/b/g/n/ac/ax Wave 2 wireless standards
- Built-in 2 x 2 MIMO antenna
- Multi-operation modes to suit different wireless applications
- Provides up to 8 SSIDs to separate network traffic
- High power and receiver sensitivity designed to boost your signal coverage and link speed
- Supports WPA3 encryption
- Weatherproof IP67-rated housing



N300 PoE Wireless Access Point, Controller Managed

WAP-6117

- Share your wireless network up to 300Mbps
- Compatible with IEEE 802.11b/g/n wireless standards
- Provides up to 4 SSIDs to separate network traffic and enhance security
- Multi-operation modes to suit different wireless applications
- Supports WEP, WPA and WPA2 encryption with IEEE 802.1x for high level security
- IEEE 802.3af PoE compliant to simplify deployment and installation



AC1200 Dual Band Wireless Access Point, Controller Managed

WAP-8021

- Share your wireless network up to 1200Mbps
- Compatible with IEEE 802.11a/b/g/n/ac wireless standards
- Dual band technology reduces interference, providing reliable connections
- Provides up to 8 SSIDs to separate network traffic and enhance security
- Multi-operation modes to suit different wireless applications



AC750 Dual Band PoE Wireless Access Point, Ceiling Mount, Controller Managed

WAP-8121

- Share your wireless network up to 750Mbps
- Compatible with IEEE 802.11a/b/g/n/ac wireless standards
- Provides up to 8 SSIDs to separate network traffic and enhance security
- Multi-operation modes to suit different wireless applications
- Auto Channel Selection for low interference band
- Dual power support: 12V DC/PoE (IEEE 802.3at)



AC1200 Dual Band PoE Wireless Access Point, Ceiling Mount, Controller Managed

WAP-8123

- Compatible with IEEE 802.11 a/b/g/n/ac Wave 2 wireless standards
- MU-MIMO technology greatly enhances WLAN performance for all clients
- Provides wireless speeds of up to 300Mbps (2.4GHz) / 867Mbps (5GHz)
- Dual power support: 12V DC/PoE (IEEE 802.3at)
- Multi-operation modes to suit different wireless applications
- Auto Channel Selection for low interference band
- Provides up to 8 SSIDs to separate network traffic and enhance security
- High power and receiver sensitivity designed to boost your signal coverage and link speed



AX1800 Dual Band Wi-Fi 6 PoE Wireless Access Point

WAP-8131

- Provides wireless speeds of up to 1800Mbps(574Mbps in 2.4GHz/1201Mbps in 5GHz)
- OFDMA and MU-MIMO support
- Compatible with IEEE 802.11a/b/g/n/ac/ax Wave 2 wireless standards
- Built-in 2 x 2 MIMO antenna
- Multi-operation modes to suit different wireless applications
- Dual power support: 12V DC/PoE (IEEE 802.3at)
- Provides up to 8 SSIDs to separate network traffic
- High power and receiver sensitivity designed to boost your signal coverage and link speed
- Supports WPA3 encryption, compatible with WPA2/WPA



N300 PoE Wireless Access Point, In-Wall Mount, Controller Managed

WAP-6221

- Share your wireless network up to 300Mbps
- Compatible with IEEE 802.11b/g/n wireless standards
- Wall-mounted design fits standard 86x86mm socket
- IEEE 802.3af PoE compliant to simplify deployment and installation
- Provides up to 4 SSIDs to separate network traffic and enhance security
- Supports WEP, WPA and WPA2 encryption with IEEE 802.1x for high level security



AX1800 Dual Band Wi-Fi 6 In-Wall PoE Wireless Access Point

WAP-8231

- Provides wireless speeds of up to 1800Mbps(574Mbps in 2.4GHz/1201Mbps in 5GHz)
- OFDMA and MU-MIMO support
- Compatible with IEEE 802.11a/b/g/n/ac/ax Wave 2 wireless standards
- Dual band technology reduces interference, providing reliable connections
- IEEE 802.3af PoE compliant to simplify deployment and installation
- Provides up to 8 SSIDs to separate network traffic and enhance security
- Supports WPA3 encryption
- Wall-mounted design fits standard 86x86mm socket



9dBi 2.4GHz Omni-directional Outdoor Antenna
OAN-2090

- IEEE 802.11 b/g/n application in 2.4GHz Frequency Range
- Omni-directional operation provides extended point to multi-point coverage



12dBi 2.4GHz Omnidirectional Antenna
OAN-2121

- For IEEE 802.11b/g/n Wireless applications in 2.4GHz frequency range
- Provides 12dBi omnidirectional operation
- Low wind loading
- -30°C to 60°C operating temperature range



10dBi 5GHz Omnidirectional Antenna
OAN-4102

- For IEEE 802.11a/n/ac Wireless applications in 5 GHz frequency range
- Provides 10dBi omnidirectional operation
- Low wind loading
- -30°C to 60°C operating temperature range



12dBi 5GHz Omnidirectional Antenna
OAN-4121

- For IEEE 802.11a/n/ac Wireless applications in 5 GHz frequency range
- Provides 12dBi omnidirectional operation
- Low wind loading
- -30°C to 60°C operating temperature range



5dBi/8dBi 2.4GHz/ 5GHz Dual Band Omnidirectional Antenna

[OAN-4058](#)

- Provides 5dBi/8dBi omnidirectional operation
- For IEEE 802.11a/b/g/n/ac Wireless applications in 2.4/5 GHz frequency range
- Low wind loading
- -30°C to 60°C operating temperature range



12dBi 2.4GHz Directional Panel Antenna

[WAN-2121](#)

- Provides 12dBi directional operation
- Directional operation provides extended point to point coverage
- For IEEE 802.11b/g/n Wireless applications in 2.4GHz frequency range
- Low wind loading



18dBi 2.4GHz Directional Panel Antenna

[WAN-2182](#)

- Provides 18dBi directional operation
- Directional operation provides extended point to point coverage
- For IEEE 802.11b/g/n Wireless applications in 2.4GHz frequency range
- Low wind loading
- -30°C to 60°C operating temperature range



20dBi 2.4GHz Directional Panel Antenna

[WAN-2201](#)

- Provides 20dBi directional operation
- Directional operation provides extended point to point coverage
- For IEEE 802.11b/g/n Wireless applications in 2.4GHz frequency range
- Low wind loading
- -30°C to 60°C operating temperature range



20dBi 5GHz Directional Panel Antenna

[WAN-4201](#)

- Provides 20dBi directional operation
- Directional operation provides extended point to point coverage
- For IEEE 802.11a/n/ac Wireless applications in 5 GHz frequency range
- Low wind loading
- -30°C to 60°C operating temperature range



15dBi 2.4GHz Directional Dual-Polarization Panel Antenna

[WAN-7151](#)

- Provides 15dBi directional operation
- For IEEE 802.11b/g/n Wireless applications in 2.4GHz frequency range
- Directional operation provides extended point to point coverage
- Dual-Polarization to avoid interference
- Low wind loading
- -30°C to 60°C operating temperature range



**15dBi 5GHz
Directional
Dual-Polarization
Panel Antenna**
WAN-9151

- Provides 15dBi directional operation
- Directional operation provides extended point to point coverage
- For IEEE 802.11a/n/ac Wireless applications in 5 GHz frequency range
- Dual-Polarization to avoid interference
- Low wind loading



**18dBi 5GHz
Directional Dual-
Polarization Outdoor
Panel Antenna**
WAN-9180

- Operates in 5GHz band, according to IEEE 802.11a/n specifications
- Antenna diversity at 18dBi high gain performance
- Dual-Polarization to avoid interference
- Easy to install on the wall surface
- Wideband frequency performance enables future growth and increases flexibility



Antenna Cable
ANC - 4110 (1M)
ANC - 4150 (5M)

- N male to N male
- Heat shrink tubing on both ends for wire insulation and protection
- CFD-400 low loss coaxial cable



**HDMI over IP PoE
Receiver**
HVE-6501R



**HDMI over IP PoE
Transmitter**
HVE-6501T

- Flexible and scalable HDMI 1080p High Quality Video Broadcasting with Gigabit Ethernet LAN
- Multicasting and broadcasting architecture, adding more displays without adding LAN bandwidth loading
- Transmits HDTV resolutions up to 1080p.
- Transmits an HDMI signal over one CAT5e/6/7 cable.
- HDMI 1.3b and HDCP compliant
- Support Point-to-Point, Point-to-Many and Many-to-Many network configuration
- Dual power input: 802.3af compliant PoE & DC5V
- Up to 16 transmitters and more than 200 receivers possible in a single system
- Multicasting group with Gigabit Ethernet switch via 802.1Q VLAN and IGMP
- Built-in DIP switch to change Group ID and Utility for remotely
- Multi-casting group with Gigabit Ethernet switch (required 802.1Q VLAN & IGMP function)
- RS-232 Control Pass-Thru to control HDMI display from transmitter side
- Plug and Play installation, free bundle utility for advance setting



**HDMI Video Wall
over IP PoE Receiver**
HVE-6601R



**HDMI Video Wall
over IP PoE
Transmitter**
HVE-6601T

- Flexible and scalable HDMI 1080p Video Wall Broadcasting with Gigabit Ethernet LAN
- Multicasting and broadcasting architecture, adding more displays without adding LAN bandwidth loading
- Up to 8 transmitters and 64 receivers possible in a single Video Wall system
- Transmits HDTV resolutions up to 1080p.
- Transmits an HDMI signal over one CAT5e/6/7 cable.
- HDMI 1.3b and HDCP compliant
- Support Point-to-Point, Point-to-Many and Many-to-Many network configuration
- Dual power input: 802.3af compliant PoE & DC5V
- Multicasting group with Gigabit Ethernet switch (required 802.1Q VLAN & IGMP function)
- Built-in DIP switch to change Group ID and Utility for remotely
- RS-232 Control Pass-Thru to control HDMI display from transmitter side
- Plug and Play installation, free bundle utility for advance setting



HDSpider™ HDMI over Cat.5 Long Range Receiver
HVE-9000



HDSpider™ HDMI over Cat.5 Transmitter, Cascadable
HVE-9003



HDSpider™ 4-Port HDMI over Cat.5 Transmitter
HVE-9004



HVE-9006 HDMI over Cat.5/6 Extender kit
HVE-9006

- Works with Cat.5, Cat.5e, Cat.6 Ethernet cable
- Transmission Distance of up to 60m for 1080i or 40m for 1080p
- Minimize the cable skew using 8-level adjustable equalization knob
- Provides Higher speed - 6.75Gbps
- HDMI deep color enables display with more natural and vivid colors
- HDMI 1.3c complaint

- Transmission distance of up to 50m for 1080P resolution
- Simple Plug and Play installation
- Bi-Directional IR pass through
- Support full frequency IR signal from 20KHz to 60KHz



HVE-9007 HDMI over Cat.5/6 Extender kit
HVE-9007



HDMI over Cat.6 Extender kit with USB extension
HVE-8110

- Transmission distance of up to 50m for 4k2k resolution
- Screw-in power socket for added safety
- Simple Plug and Play installation
- Bi-Directional IR pass through

- Transmission distance of up to 100m for 4k2k resolution, over single CAT6 cable.
- Bi-Directional IR pass through.
- Smart EDID management.
- USB connector for Keyboard and Mouse.
- Transmission distance of up to 50 m , over single CAT.5E cable.
- Simple Plug and Play installation.



HDMI over Cat.6 Extender kit 4K,100 Meter, USB extension HVE-8111

- The high-definition video source transmits HD video signal through the network cable up to 50m at 4K60Hz, 100m at 4K30Hz
- Compliance with the HDMI2.0 standard protocol, HD video signal resolution max up to 3840*2160@60Hz
- Compliant with HDCP2.2 standard - high-bandwidth digital content protection technology
- Supports USB KVM function that can long-distance use keyboard or mouse controlled
- Supports EDID copy function that can match many kinds of display devices
- Supports POC unilateral power supply
- Ability to automatically identify and configure various display modes
- Built-in automatic adjustment system, make the image smooth, clear and stable
- Built-in ESD protection circuit, comprehensive protection system safety
- Simple and easy to install, plug and play, no need to set up further
- Simple to install, plug and play.



HDMI over IP PoE Transmitter/Receiver HVE-6701T/HVE-6701R

- Support video resolution up to 1920*1080P@60Hz
- Supports over TCP/IP protocol, One-to-many, many-to-many applications with POE switches
- Built-in button change Group ID and Visualization ID Group LED
- Supports Stereo Audio over IP, independent to HDMI extension Support over TCP/IP
- Supports USB (Keyboard, Mouse) extension over IP
- Multicasting group with Gigabit Ethernet switch via 802.1Q VLAN and IGMP
- RS-232 Control Pass-Thru to control HDMI display from transmitter side
- Compliance with HDMI 1.3 and HDCP 1.2 standard
- High compatibility, can auto-match source and display device
- Built-in automatic adjustment system, make the image smooth, clear and stable
- Simple to install, plug and play.



HDMI over Cat.5 Transmitter, HDBaseT, 100m, 4 Channel Outputs HVE-9214T

- Simple Plug and Play installation
- Built-in EDID Hot Plug Detection (HPD)
- HDMI outputs with EDID management
- Transmission distance of up to 100m for HDMI(4k2k), IR and RS-232
- Bi-Directional RS-232 pass through and IR control
- Supports video resolutions up to 3840 x 2160 (4K x 2K) @ 30Hz
- HDMI and HDCP complaint
- Supports Dolby TrueHD, DTS-HD Master Audio, Dolby Digital Plus, LPCM 7.1 audio
- Supports 3D, CEC & Lip Sync pass-through
- Screw-in power socket for added safety



**HDMI over Cat.5
Extender Kit,
HDBaseT, 100m**
[HVE-9200](#)



**HDMI over Cat.5
Extender Kit,
HDBaseT, 100m,
802.3af PoE**
[HVE-9200P](#)



**HDMI over Cat.5
Receiver, HDBaseT,
100m, 802.3af PoE**
[HVE-9211PR](#)



**HDMI over Cat.5
Receiver, HDBaseT,
100m**
[HVE-9211R](#)



**HDMI over Cat.5
Transmitter,
HDBaseT, 100m, 4
Channel Outputs,
802.3af PoE**
[HVE-9214PT](#)

- IEEE 802.3af PoE compliant to simplify deployment and installation
- Simple Plug and Play installation
- Built-in EDID Hot Plug Detection (HPD)
- HDMI outputs with EDID management
- Transmission distance of up to 100m for HDMI(4k2k), IR and RS-232
- Bi-Directional RS-232 pass through and IR control
- Supports video resolutions up to 3840 x 2160 (4K x 2K) @ 30Hz
- HDMI and HDCP complaint
- Supports Dolby TrueHD, DTS-HD Master Audio, Dolby Digital Plus, LPCM 7.1 audio
- Supports 3D, CEC & Lip Sync pass-through
- Screw-in power socket for added safety



**2-Port USB VGA
KVM Switch, audio
support**
KVM-0221

- Control and manage 2 computers by using a single USB keyboard, mouse and monitor
- Supports video resolutions up to 2048 x 1536
- Easy switching between computers with keyboard hotkeys/ front panel push button
- Windows and Mac switching software support
- Self powered through USB connection
- Independent/simultaneous switching of PC and audio/mic channel
- Provides auto-scanning features and audio support



**2-Port USB KVM
Switch**
KVM-0222

- Control and manage 2 computers by using a single USB keyboard, mouse and monitor
- Supports video resolutions up to 2048 x 1536
- Easy switching between computers with keyboard hotkeys/ front panel push button
- Windows and Mac switching software support
- Self powered through USB connection
- Independent/simultaneous switching of PC and audio/mic channel



**2-Port USB VGA Cable
KVM Switch, audio
support**
KVM-0223

- 1 x wired QuickSwitch button for instant switching
- Control and manage 2 computers by using a single USB keyboard, mouse and monitor
- Windows and Mac switching software support
- USB 2.0 hub ports for keyboard, mouse or other high-speed USB devices
- VGA analog video up to 2048 x 1536 pixels
- Independent/simultaneous switching of PC and audio/mic channel
- User-definable hotkeys and universal hotkey for computer switching



**2-Port USB DVI-D
Single Link Cable
KVM Switch, audio
support**
KVM-0260

- Supports high-video quality – DDC2B and 1920x1200 pixels
- Control and manage 2 computers by using a single USB keyboard, mouse and monitor
- Provides auto-scanning features and audio/microphone support
- Supports HDCP, High-Bandwidth Digital Content Protection
- Easy switching between computers with keyboard hotkeys
- Self powered through USB connection
- Simple Plug and Play installation



2-Port USB HDMI Cable KVM Switch
KVM-0290

- Supports high-video quality – DDC2B and 1920x1200 pixels
- Control and manage 2 computers by using a single USB keyboard, mouse and monitor
- Provides auto-scanning features
- Supports HDCP, High-Bandwidth Digital Content Protection
- Easy switching between computers with keyboard hotkeys
- Self powered through USB connection
- Simple Plug and Play installation



4-Port USB VGA KVM Switch, audio support
KVM-0421

- Control and manage 4 computers by using a single USB keyboard, mouse and monitor
- Supports video resolutions up to 2048 x 1536
- Easy switching between computers with keyboard hotkeys/ front panel push button
- Windows and Mac switching software support
- Self powered through USB connection
- Independent/simultaneous switching of PC and audio/mic channel
- Provides auto-scanning features and audio support



4-Port USB VGA KVM Switch
KVM-0422

- uters by using a single USB keyboard, mouse and monitor
- Supports video resolutions up to 2048 x 1536
 - Easy switching between computers with keyboard hotkeys/ front panel push button
 - Windows and Mac switching software support
 - Self powered through USB connection
 - Independent/simultaneous switching of PC and audio/mic channel
 - Provides auto-scanning features and audio support



16-Port PS/2-USB VGA KVM Switch
KVM-1631

- Control and manage 16 computers or up to 256 computers via daisy chain function from a single location
- Supports video resolutions up to 1920 x 1440
- Built-in IP module slot for KVM-over-IP capability
- Provides auto-scanning features



16-Port PS/2-USB VGA Switch
KVM-3216



8-Port PS/2-USB VGA KVM Switch
KVM-3208

- Supports video resolutions up to 2048 x 1536
- Numerical LED display and LED indicators for easy bank/port status monitoring
- Autoscan period programmable 10 ~ 95 through OSD Menu option
- Control and manage 8 computers or up to 248 computers via daisy chain function
- Enhanced PS/2 mouse reset hotkeys for non-PnP OS such as Win NT 4.0 and Linux
- Buzzer sound for hotkey and port switching confirmation
- Password protection
- Active Sync Replication for DDC emulation
- Auto-logout timeout support

- Supports video resolutions up to 2048 x 1536
- Numerical LED display and LED indicators for easy bank/port status monitoring
- Autoscan period programmable 10 ~ 95 through OSD Menu option
- Control and manage 16 computers or up to 256 computers via daisy chain function
- Enhanced PS/2 mouse reset hotkeys for non-PnP OS such as Win NT 4.0 and Linux
- Buzzer sound for hotkey and port switching confirmation
- Password protection
- Active Sync Replication for DDC emulation
- Auto-logout timeout support



ACC-3201/2/3/4
KVM CABLE FOR KVM-3208
KVM-3216



19" Widescreen LCD KVM Rack Console

KVM-8901US (US KEYBOARD)
KVM-8901DE (DE KEYBOARD)
KVM-8901FR (FR KEYBOARD)
KVM-8901UK (UK KEYBOARD)
KVM-8901ES (ES KEYBOARD)

- Modular design for optional KVM switches, enabling management of up to 128 computers
- Dual Interface for PS/2 and USB keyboard/mouse
- Easy switching between computers with keyboard hotkeys/On Screen Display (OSD) menus
- Auto scan mode for non-stop monitoring of selected computer
- Password protection prevents unauthorized access



KVM over Cat.5 Extender KVM-9036

- A single, inexpensive Cat.5 or above UTP cable replaces bulky KVM cables
- Access a computer, server or KVM switch up to 100m away.
- Easy to install and use with plug-and play functionality
- LED indicators for computer status or data transmission
- Switch computers by push button or hotkey commands
- Audible feedback when switching
- Work with PS/2 or USB computer
- 3-in-1 space saving design



12-Outlet Intelligent Power Distribution Unit

IPS-1201E (200-240V AC)

- Hourly-based current statistics for analysis and diagnosis
- Alarms for power failure by relay output
- Management: web browser, SNMP, SSH and Hyper Terminal
- Network Security: TLS and SSH
- Power on/off control on each port
- Access Control: Access Control List (ACL) / RADIUS
- Power protection: overvoltage / overcurrent



24-Port PoE Surge Protector, 6KV, 30W

ESP-2400

- IEEE 802.3af/at PoE compliant to simplify deployment and installation
- 6KV surge protection level on each port
- Complete protection against power surges for PoE devices
- Port isolation design prevents surge spread
- Remote power feeding up to 100m
- 19-inch rackmount kit included
- Simple Plug and Play installation



24V DC Industrial Power Supply
POW-2411

- 30W, DIN-Rail
- Universal AC Input at Full Range
- Short Circuit, Overload / Over Voltage Protection
- Fanless Design
- Supports DIN-rail installation
- Isolation Class II
- 100% Full Load Burn-in Test



24V DC Industrial Power Supply
POW-2421

- 60W, DIN-Rail
- Universal AC Input at Full Range
- Short Circuit, Overload / Over Voltage Protection
- Fanless Design
- Supports DIN-rail installation
- Isolation Class II
- 100% Full Load Burn-in Test
- UL 508 approval



24V DC Industrial Power Supply
POW-2431

- 75W, DIN-Rail
- Universal AC Input at Full Range
- Short Circuit, Overload / Over Voltage Protection
- Fanless Design
- Supports DIN-rail installation
- Isolation Class II
- 100% Full Load Burn-in Test
- UL 508 approval



24V DC Industrial Power Supply
POW-2432

- 75W, DIN-Rail
- Universal AC Input at Full Range
- Short Circuit, Overload / Over Voltage Protection
- Fanless Design Supports
- DIN-rail installation
- 100% Full Load
- UL 508 approval



24V DC Industrial Power Supply

POW-2441

- 120W, DIN-Rail
- Universal AC Input at Full Range
- Short Circuit, Overload / Over Voltage Protection
- Fanless Design
- Supports DIN-rail installation
- Isolation Class II
- 100% Full Load Burn-in Test
- UL 508 approval



24V DC Industrial Power Supply

POW-2442

- Universal AC Input at Full Range
- Short Circuit, Overload / Over Voltage Protection
- Fanless Design Supports
- DIN-rail installation
- 100% Full Load
- Burn-in Test DC OK Relay Contact



24V DC Industrial Power Supply

POW-2462

- 480W, DIN-Rail
- Universal AC Input at Full Range
- Short Circuit, Overload / Over Voltage Protection
- Fanless Design Supports
- DIN-rail installation
- 100% Full Load
- UL 508 approval



48V DC Industrial Power Supply

POW-4821

- 75W, DIN-Rail, PoE Ready
- Universal AC Input at Full Range
- Short Circuit, Overload / Over Voltage Protection
- Fanless Design
- Supports DIN-rail installation
- 100% Full Load Burn-in Test
- UL 508 approval



48V DC Industrial Power Supply

POW-4822

- 75W, DIN-Rail
- Universal AC Input at Full Range
- Short Circuit, Overload / Over Voltage Protection
- Fanless Design Supports
- DIN-rail installation
- 100% Full Load
- UL 508 approval



48V DC Industrial Power Supply

POW-4841

- 120W, DIN-Rail, PoE Ready
- Universal AC Input at Full Range
- Short Circuit, Overload / Over Voltage Protection
- Fanless Design
- Supports DIN-rail installation
- UL 508 approval



48V DC Industrial Power Supply

POW-4842

- 120W, DIN-Rail
- Universal AC Input at Full Range
- Short Circuit, Overload / Over Voltage Protection
- Fanless Design Supports
- DIN-rail installation
- 100% Full Load
- UL 508 approval



48V DC Industrial Power Supply

POW-4851

- 240W, DIN-Rail, PoE Ready
- Universal AC Input at Full Range
- Short Circuit, Overload / Over Voltage Protection
- Fanless Design
- Supports DIN-rail installation
- 100% Full Load Burn-in Test
- UL 508 approval



48V DC Industrial Power Supply

POW-4861

- 480W, DIN-Rail, PoE Ready
- Universal AC Input at Full Range
- Short Circuit, Overload / Over Voltage Protection
- Fanless Design
- Supports DIN-rail installation
- 100% Full Load Burn-in Test
- UL 508 approval



POW-4801 48V DC Power Supply

POW-4801

- Universal AC Power Input: 90V-264VAC, 50 / 60Hz
- Power Output: 48VDC / 1.25A
- Wide Operating Temperature range:-30-70°C
- DC Plug: 5.5±0.1/2.1±0.1mm



UNINTERRUPTIBLE POWER SUPPLIES (UPS)





**UPS-2101, Volta
Online IOT UPS
1KVA/1000W**
UPS-2101

- True double-conversion design with high adaptability to harsh mains conditions;
- Real PF 1 can provide more power in same space High efficiency results in energy saving;
- Adjustable charging current and flexible battery configuration;
- Optimized changing method to expand battery life time;
- Built-in OVCD protection, fan lock detection, over temperature detection, overload warning to enhance the product reliability;
- Dot matrix LCD support up to 10 languages for easy installation and service;
- (Included 8 languages, with 2 additional customizable options);
- Embedded Ethernet port solution provide safe network connection to Cloud which will meet the increasing IoT trend;
- Mobile APP for monitoring, Support Android/iOS;
- USB HID enable monitoring on UPS without software installation;
- Dry contactor for industrial condition.



**UPS-2102, Volta
Online IOT UPS
2KVA/2000W**
UPS-2102

- True double-conversion design with high adaptability to harsh mains conditions;
- Real PF 1 can provide more power in same space High efficiency results in energy saving;
- Adjustable charging current and flexible battery configuration.
- Optimized changing method to expand battery life time;
- Built-in OVCD protection, fan lock detection, over temperature detection, overload warning to enhance the product reliability;
- Dot matrix LCD support up to 10 languages for easy installation and service;
- (Included 8 languages, with 2 additional customizable options);
- Embedded Ethernet port solution provide safe network connection to Cloud which will meet the increasing IoT trend;
- Mobile APP for monitoring, Support Android/iOS;
- USB HID enable monitoring on UPS without software installation;
- Dry contactor for industrial condition.



**UPS-2103, Volta
Online IOT UPS
3KVA/3000W**
UPS-2103

- True double-conversion design with high adaptability to harsh mains conditions;
- Real PF 1 can provide more power in same space;
- High efficiency results in energy saving;
- Adjustable charging current and flexible battery configuration;
- Optimized changing method to expand battery life time;
- Built-in OVCD protection, fan lock detection, over temperature detection, overload warning to enhance the product reliability;
- Dot matrix LCD support up to 10 languages for easy installation and service;
- (Included 8 languages, with 2 additional customizable options);
- Embedded Ethernet port solution provide safe network connection to Cloud which will meet the increasing IoT trend;
- Mobile APP for monitoring, Support Android/iOS;
- USB HID enable monitoring on UPS without software installation;
- Dry contactor for industrial condition.



**URK-2100, Rail Kit for
UPS-2101/2102/2103**
URK-2100

- "Rail Kit for UPS-2101/2102/2103
- Dimensions (W x D x H) 440x40x40"

NOTES

NOTES





Distributed By:

2024.1.2 EN

www.level1.com